



THE HARRY S TRUMAN COORDINATING COUNCIL REGIONAL OUTLOOK MONTHLY NEWSLETTER



HSTCC
800 E Pennell
Carl Junction, MO
Tel-417.649.6400
www.hstcc.org

Table of Contents:

- Current Events
- CEDS
- Transportation
Advisory Committee
- Trail Planning
- Region M
- Community Planning
- Environmental Planning
- MO Foundation for
Health

The primary goal is to provide communities a forum in which they can make the best use of limited resources to meet local needs. Services include Comprehensive Planning, Economic Development Planning, Grant Preparation and Administration, Transportation Planning, Hazard Mitigation Planning and the administration of the Region M Solid Waste Management District.

Next Meeting Dates:

Bi-monthly on fourth Wednesday

- July 25th, 2:00 pm
- September 26th, 2:00 pm
- November 28th, 2:00 pm

Executive Committee:

- Gary Turner, Chairman –
Sarcoxi Economic Dev
- Cyndi Hutchings, Vice
Chairperson – City of
Seneca
- Ceri Otero, Secretary/Treas
– City of Carthage
- John Bartosh – Jasper
County
- John Bunch – McDonald
County
- Gary Shaw - City of Joplin
- Barton County - Vacant
- Newton County - Vacant



CURRENT EVENTS

WHAT'S HAPPENING IN THE OZARKS?

July-Aug
2018

Saturday 7/07/18

Jasper County Youth Fair
Municipal Park – Carthage MO

Wednesday 7/11/18

Newton County Fair
Jim Russell Memorial Arena –
Neosho MO

Friday 7/13/18

Noon – 9:00 pm
Food Truck Friday
Central Park – Carthage MO

Friday 7/13/18

7:30 am
Joplin Area Chamber of
Commerce Morning Brew
Liberty Utilities – Empire
Electric

Saturday 7/14/18

10:00 am – 3:00 pm
75th Carver Day
Celebration
George Washington
Carver National
Monument in
Diamond MO

Friday 7/19/18

Golden Harvest Days
Barton County – Lamar,
MO
2466 W Old 66 – Carthage
MO

Monday 7/23/18

Summer Theatre Camp
2466 W Old 66 – Carthage
MO

Wednesday 7/25/18

2:00 pm - 3:30 pm
Harry S Truman Coordinating
Council Board Meeting
Parkwood Senior Housing Con-
ference Room in Joplin MO

Friday 8/03/18

Back to School Block Party
in Noel MO



Friday 8/10/18

Noon – 9:00 pm
Food Truck Friday
Central Park – Carthage MO

Wednesday 8/18/18

Lamar Free Fair
Downtown Square
Lamar MO

Thursday 8/23/18

Hot Links Golf Tournament
Eagle Creek Golf Club
2742 Ben Pell Drive
Joplin, MO



800 E PENNELL CARL JUNCTION MO 64834

FIND US AT:

P. 417.649.6400

F. 417.649.6409

TRUMAN
COORDINATING COUNCIL



COMPREHENSIVE ECONOMIC DEVELOPMENT STRATEGY

The Harry S Truman Coordinating Council (HSTCC) invited business and community leaders to attend a planning session Tuesday, June 27, to contribute information and ideas for the region's Comprehensive Economic Development Strategy (CEDS).

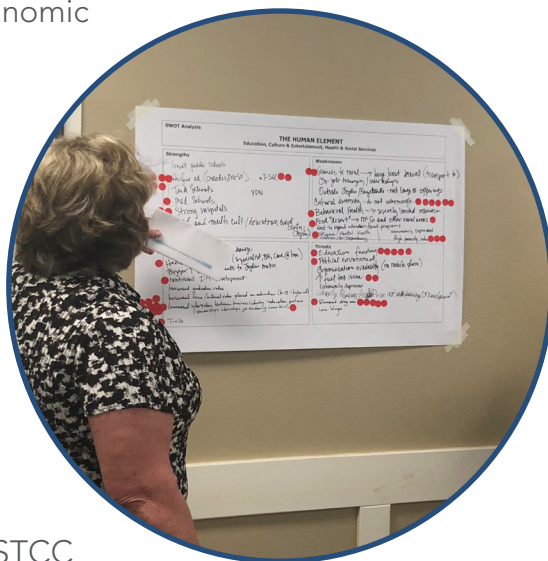
The CEDS provides a long-term economic development plan that serves as a roadmap to progress and prosperity. The locally-based, regionally-driven economic development plan and document successfully engages community leaders, private sector partners, Economic Development Districts (EDDs), and other stakeholders in scoping for our region's future.

The CEDS planning process creates the space for the Barton, Jasper, Newton and McDonald county region to identify strengths and weaknesses and target approaches for making improvements. Activities allow a diverse set of partners to study the workforce, recommend economic diversity and new approaches to economic growth.

The CEDS is a pre-requisite for federal designation as an EDD and must be updated at least every five years. An effective CEDS allows a region to maximize its economic development potential, as well as engage with the US Economic Development Administration (EDA) and other federal partners to receive infrastructure and technical assistance grants, such as EDA's Public Works and Economic Adjustment Assistance programs

A SWOT Analysis was performed. This committee looked at Strengths, Weaknesses, Opportunities and Threats of four elements that are directly related to economic development in our region. The Human Element, The Economy, The Natural Environment and The Built Environment. The response to this interactive activity was very successful.

The next meetings are set for October 18th and March 14th and the final document is due in June of 2019.



For additional information, you may contact Jill Cornett, HSTCC Executive Director (417) 649-6400. Or email jcornett@hstcc.org

TRANSPORTATION ADVISORY COMMITTEE



6/13/18 TAC Meeting:

MISSOURI LOCAL TRAINING AND RESOURCE PROGRAM (LTAP): Heath Pickerill, guest speaker, had a power point presentation for the committee. LTAP provides training and resources; and promote and manage the MO-LTAP Scholars Program through training, recognition, and professional development.



The TAC meeting dates for the next year:

August 29th
October 24th
December 12th
February 20th 2019
April 17th 2019
June 19th 2019

TAC Represenataives
in the HSTCC Region:

City of Carthage
City of Sarcoxie
City of Lamar
City of Neosho

City of Seneca
City of Anderson
City of Noel
Barton County
Commission
Jasper County
Commission

Newton County
Commission
McDonald Couny
Commission
District Planner and
Area Engineer, MoDOT



TRANSPORTATION ADVISORY COMMITTEE

The TAC voted on the needs prioritization list at their June meeting and has sent this information to MODOT.

Road and Bridge List 2018



County	City	Need/Issue	Location	Rank
McDonald	County	New roadway/major congestion and safety issues	I-49 from Pineville to Bella Vista (Bella Vista Bypass).	1
McDonald	Anderson	Intersection Improvements/fatalities and collision prone	On Bus. 71 . at Patterson St. (Rachael's Corner)	2
Newton	Neosho	Intersection Improvements/accident prone intersection	On Bus.49 at Hammer Rd.	3
Newton	Neosho	Intersection Improvements/accident prone intersection	On MO-86 at Gateway Dr.	4
Newton	N of	Notification of intersection	Hwy 59 and Route FF	5
McDonald	County	Intersection Improvements/accident prone intersection	OR-71 at Meadowlark Lane and Rte. 71 Outer Road	6
Jasper	Carthage	Interchange upgrade/ accident prone and under interstate	On I-49 at 171 interchange	7
McDonald	Noel	High flood area, causing more deterioration of bridge and	MO 59 and MO 90	8
Barton	Lamar	Road floods when heavy rains occur/elevated roadway	On Hwy. 160 from I-49 to SE 30th Ln.	9
McDonald	Anderson	Intersection Improvements/accident prone intersection	On 59 Hwy. at 76 Hwy.	10
Jasper	Carthage	Accommodate truck traffic to proposed industrial park	Outer road, W of I-49 and S of HH Highway	11
McDonald	County	Intersection Improvements/accident prone intersection	US-71 at Wolf Den Rd.	12
Newton	Neosho	Intersection Improvements/accident prone intersection	At Freeman Rd, South St, and HH Highway	13
McDonald	County	Intersection Improvements/accident prone intersection	US-71 at Meadowlark Ln and Raines Rd.	14
Newton	Diamond	Need intersection level/ large dip in the intersection that causes	At Routes V & J in Diamond	15
Barton	Lamar/Cou	Widening, hard surfacing, elevate road, add shoulders/accident	On KK from 40th to Lamar	16
Jasper	Carthage	Two roundabouts to mitigate congestion/	On 571 Hwy. From Phelps Blvd to 2705 Grand Blvd.	17
Jasper	Carthage	Traffic signals at intersection	Intersection of Garrison Ave and HH Highway	18
Jasper	Carthage	Additional traffic control	Intersection of Chapel Rd and HH Highway	19
Jasper	Carthage	Widen road/ accident prone and congested road	On HH Hwy. from 571 Hwy. to Russel Smith Way	20

Bike and Pedestrian List 2018



County	City	Need/Issue	Location	Rank
Newton	Neosho	Need ADA sidewalk connecting the city to school	From 86 Hwy to South St	1
McDonald	Noel	Need pedestrian and bicycle accommodations to Tysons	From Main St to N Cliffside Dr	2
Barton	Liberal	Sidewalk connecting to elementary school	On Yale from Denton to Payne St	3
Barton	Liberal	Sidewalk connecting to elementary school	South side of Maple St from Main St to Payne St	4
McDonald	Anderson	Need pedestrian and bicycle accommodations across bridge	Bridge over Indian Creek in Anderson MO	5
Newton	Neosho	Need ADA sidewalk connecting the city to high school	On Bus 86 from W Harmony St to N High St	6
Jasper	Carthage	Need ADA sidewalk connecting the city to school	From River St to 1201 E Fairview Ave (Fairview Elementary)	7
Jasper	Stella	Need ADA sidewalk connecting the city to Indian Creek	On Ozark St from A Hwy to Indian Creek	8
Jasper	Sarcoxi	Historic Square	Need sidewalk and bike path around square	9
Barton	Lamar	Need streetscaping, sidewalks, antique lighting, ADA	On 11th St from Gulf St to HST Birthplace	10
Jasper	Sarcoxi	Historic Square, school & abandoned railway	Need ped/bike paths connecting and improving community	11
Jasper	Carthage	Complete streets, bike/ped facilities, linear greenways	Inner trail - Municipal park, YMCA, churches, park system, schools	12
Jasper	Carthage	Connect west community to city, greenspace, complete street	On Outer trail - Ruby Jack Park/Kellogg Lake/Carter Park/HighSchool, Fair Acres Park, Mercy Hospital	13
Barton	County	Need shoulders and bicycle accommodations	From Golden City to Mindemines	14
Barton	Lamar	Need streetscaping, complete streets, ADA	On Gulf St from Hwy 160 to 19th, City Park	15



TRUMAN TRAIL PLANNING

The Northwest Arkansas Regional Planning Commission and the Harry S Truman Coordinating Council are partnering to expand the Razorback Green Way Trail into the Southwest corner of Missouri. HSTCC has facilitated four Community Trail Plans for our region:



Pineville
Jane
Southwest City
Anderson

The HSTCC Regional Trail Plan will connect the cities of Fayetteville, Joplin, Lamar, Clinton, and to the Katy Trail creating a regional trail system.



Vision Statement



"The Harry S Truman Coordinating Council's vision is to create a network of linked paths that are used throughout the McDonald, Newton, Jasper, and Barton County region. We will assist in the development of a viable multi-use plan that will feature local heritage, scenic landscapes, and stimulate the economic and social vitality of the region. The multi-use trails will be utilized for exercise, recreation, transportation, equestrian, and tourism to promote safe and healthier lifestyles for the community and the generations to come."



Please join HSTCC and the City of Noel on August 13th to help build Noel's Community Trail Plan.

REGION M SOLID WASTE MANAGEMENT DISTRICT

EDUCATION:

In an effort to establish an educational partnership with the Economic Security Corp's Head Start Program, Jennifer Shotwell met with its Board of Directors on June 13th. She gave a presentation about Region M, its educational goals, and its willingness to visit with 4 and 5 year old students to talk about reducing, reusing, and recycling.

UPCOMING EVENTS:

07/14/18 - George Washington Carver Days Informational Booth - stop in and see us!

UPCOMING MEETINGS:

08/08/18 - Planners/Solid Waste Advisory Board in Jefferson City

08/14/18 - Region M Board of Directors at HSTCC Offices in Carl Junction

TRAINING:

DNR Workshop June 14th. – The Joint Legislative Committee and State Senator Wallingford set the goal for DNR's Solid Waste Management Program to implement a digital grant system. The development of the system has been ongoing for over a year, with everyone striving to make the digital grant application an efficient platform. Roll-out of this digital grant submittal program in Re-TRAC has begun. Beginning July 1st, 2018, DNR is requiring all Solid Waste Management Districts to submit annual grant packages and other grant related forms and adjustments through the Re-TRAC system. DNR hosted a training workshop for District Planners on the new system. Shotwell and the 19 other SWMD Planners attended and were provided a hands-on workshop to familiarize themselves with the new requirement.



National Park Service
U.S. Department of the Interior

George Washington Carver NM
Diamond, MO

Portrait of George Washington Carver
© Tuskegee University Archives/Museum

SAVE THE DATE

75th Carver Day Celebration!

Saturday, July 14, 2018
10:00 a.m. - 3:00 p.m.

Join us for a special day celebrating 75 years of George Washington Carver National Monument! This event features programs interpreting the life and legacy of George Washington Carver. Guest speakers, musical groups, a Junior Ranger station, and exhibitors are also included.

- Exhibitors
- Guest Speakers
- Music Performers
- Guided Tours
- Education Programs
- Activities for Kids
- Food Concession
- And more!

All Activities Free of Charge!

FIND YOUR PARK
FINDYOURPARK.COM

75
George Washington Carver National Monument

Carver Birthplace Association

JOPLIN AMERICA
Convention and Visitors Bureau

For more information contact the park at 417.325.4151 or visit www.nps.gov/gwca

The park is located two miles west of Diamond, Missouri on Highway V, then ¼ mile south on Carver Road.

REGION M SOLID WASTE MANAGEMENT DISTRICT



COMMUNITY COLLECTION EVENTS:

06/09/18 - Electronics Waste was accepted in Neosho. This was a very well attended event that diverted over 10 tons of E-waste from the landfills or being discarded improperly. Our friends at CRC Recycling, a NAID certified company, disassembles and recycles all items according to EPA standards.

07/21/18 - Pesticides will be accepted in Nevada at the Vernon County Fairgrounds. This event is free and open to the public and farmers (no businesses, please).



Region M Board of Directors:

Joe Hardin, Chairperson - Vernon County

Jim West, Vice Chair - City of Joplin

Tom Short, Sec/Treas - Cities of Jasper County

John Bartosh - Jasper County

John Bunch - McDonald County

Alan Cook - Newton County

Lewis Davis - Cities of McDonald County

Mike Davis - Barton County

Travis Gamble - Cities of Newton County

Phyllis Sprenkle - Cities of Vernon County

Russ Worsley - Cities of Barton County

Contact Jennifer Shotwell for more information on scheduling a community collection event in your area - jshotwell@hstcc.org



MISSOURI
DEPARTMENT OF
NATURAL RESOURCES

HSTCC is currently assisting two member communities with completing new comprehensive plans. Comprehensive plans are goal driven documents that represent a vision and a guide for desirable future physical development and attempt to reconcile the relationships between physical development and the social and economic goals of the community.

Typical plan elements include demographics and population projections, land-use, transportation, community facilities, natural and cultural resources, housing, and economic development.

COMMUNITY PLANNING



Pineville has not had their plan updated since 2005. With their new plan, Pineville will now be able to receive government funding from both the state and federal levels. A public meeting will be held on August 17th, 2018 and the plan should reach completion around April 2019.

Jane is in the course of doing their first comprehensive plan as well. There will be a public meeting soon, which would allow the residents of the community to be able to voice their opinions. Jane's plan should reach its final stages near May 2019.

For more information, please contact
Gerritt Brinks - gbrinks@hstcc.org



ENVIRONMENTAL PLANNING

Spring River Watershed Plan Implementation

HSTCC is partnering with the Missouri Department of Natural Resources (MDNR) and the Natural Resource Conservation Service (NRCS) to implement Best Management Practices (BMPs) in the Lamar Lake and North Fork Spring River (a.k.a. Muddy Creek) watersheds. HSTCC will be developing new cost-share programs to implement urban Best Management Practices and septic systems in the eligible portions of the North Fork Watershed. The NRCS has a National Water Quality Initiative for the Lamar Lake watershed, this program combined with normal funding opportunities from NRCS and SWCD will be focusing on agricultural BMPs. The overall goal for these programs is to reduce the amount of sediment, nutrients, and bacteria in Lamar Lake and North Fork Spring River (Muddy Creek). A public meeting will be held in September to educate area residents on the water quality issues and provide an opportunity to sign-up for an implementation program.

WHAT'S ON THE HORIZON FOR THE SPRING RIVER WATERSHED PLAN IMPLEMENTATION -

After years of delay, the Spring River Watershed Management Plan is expected to be fully approved in the near future. Once this plan is approved, the urban and septic BMP programs that are currently being developed for the North Fork Spring River subwatershed (Muddy Creek) will most likely be expanded to include all high priority subwatersheds that were identified in the Spring River Watershed Management Plan. (see map)

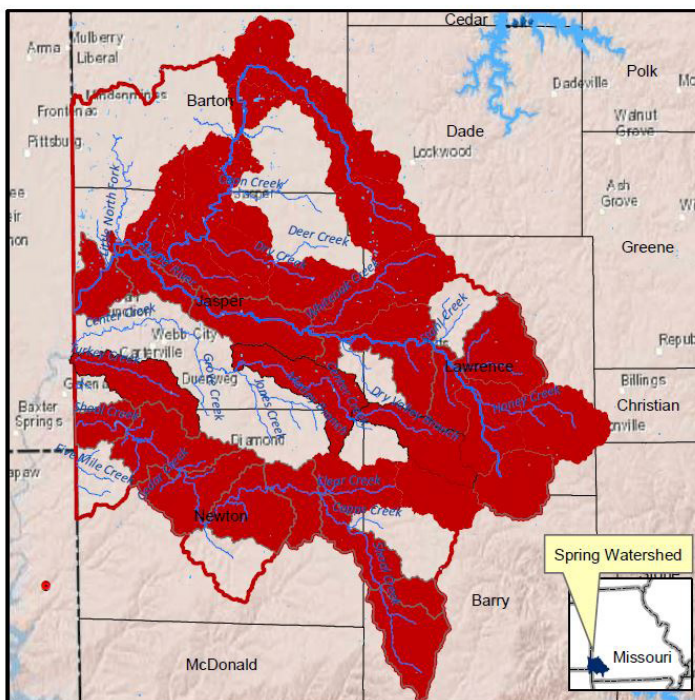


Figure 23. High Priority Sub Watersheds in the Spring River Watershed.

Barton County Hazard Mitigation Plan

The first (rough) draft of the 2018 Barton County Hazard Mitigation Plan was made available for review. HSTCC staff has been working on revisions and conducting a final round of jurisdictional meetings to finish updating each jurisdiction's mitigation action plan. Revisions and action plans will be finished at the end of June and a 30 day public comment period will be opened. The final draft of the plan will be ready for submittal to FEMA late July/early August at the closing of the public comment period.

For more information contact Heidi Scheffler - hscheffler@hstcc.org

The overall goal of the Community Convening Grant through the Missouri Foundation for Health is create new policy or programs in McDonald County that will lead to a healthier lifestyle throughout the many communities of McDonald County. The first step in achieving this goal is to identify the greatest health needs and inequalities in each community.

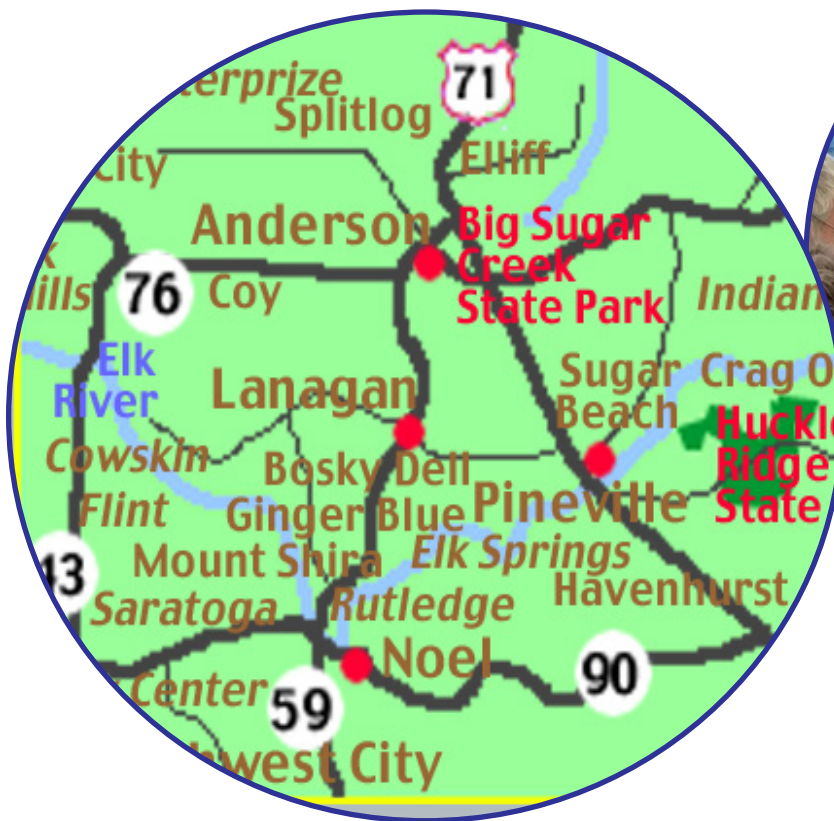
MISSOURI FOUNDATION FOR HEALTH

HSTCC is working in partnership with the McDonald County Coalition, The McDonald County Health Department, Freeman Ambulance, the Alliance of Southwest Missouri, the Community Partnership of the Ozarks, the Ozark Center, local medical providers and the Community Engagement Technical Assistance Team (CETA) to conduct a Community Health Needs Assessment. The data collected will help the HSTCC and The Missouri Foundation for Health in focusing on possible policies that will lead to sustainable changes with in all the communities in McDonald County.

a catalyst for change



Missouri Foundation
for **Health**



For more information, contact
Brandy Setzer - bsetzer@hstcc.org

TRUMAN
COORDINATING COUNCIL