

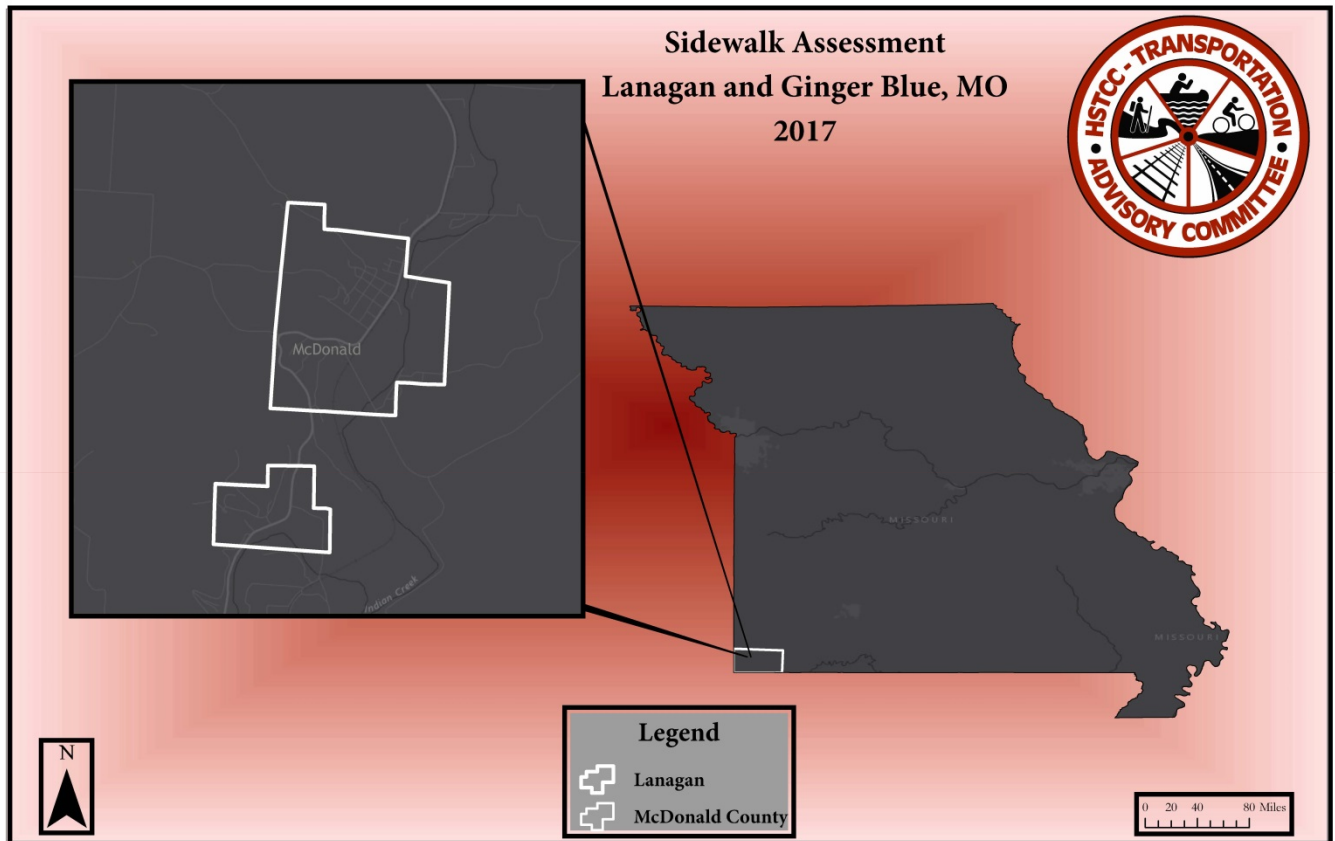
800 E Pennell St, Carl Junction, MO
64834



Phone: 417-649-6400
Fax 417-649-6409

Sidewalk Assessment

Lanagan, MO
2017





A post office called Lanagan has been in operation since 1891. According to tradition, the community was named after a railroad employee.

“In 1886 Dr. Fausett in the employment of a Pennsylvania Oil company bored down to a depth of 844 feet where he struck a strong vein of white sulphur water which flows with great force. It is located on a high bank of Indian creek and is surrounded by various other springs. The oil project was abandoned, but M. R.DeGroff, I. D. Galbraith, T. C. Lanagan and others purchased the land and, when the railroad was built, conceived the idea of building a town. It was called Sulphur Well City. But little was done with it until the railroad, or Ozark Orchard Company secured the most of the land when a depot was built and the place named Lanagan. The well has been sealed up, all but a small stream and the water conducted to a tank and fountain near the depot. This fountain is quite a novel sight and is admired by the many hundreds of people who stop at this station on their way up and down the road. This artesian well flows with sufficient force and volume to supply a good big town, while its medical qualities are nowhere surpassed in the Great Southwest. A beautiful park with numerous sprays and fountains and lakes could easily be made here supplied by this “natural water works” and Lanagan be made one of the most attractive of health resorts.”- *History of McDonald County, Missouri*, Judge J. A. Sturges , 1897

The incorporated community of Lanagan, MO is included in the 2017 assessment. The sidewalks in the City of Lanagan were assessed on their current conditions in May and June by staff at the Harry S Truman Coordinating Council and a student intern from Missouri Southern State University. The data collected by the student intern was reviewed by HSTCC staff. The chart below depicts the overall condition of sidewalks in the city:

Conditions in Linear Feet					
	Good	Fair	Poor	No Sidewalk	Total Sidewalk
Lanagan, MO	N/A	N/A	256 feet	31910 feet	256 feet





Criteria

The following criteria were used in assessing conditions. These assessment criteria are being used for assessments by all Regional Planning agencies across Missouri.

Good: Unlikely to hinder mobility of the average pedestrian. The sidewalk is free from significant cracking, buckling, gravel surfaces, or other debris which would impede pedestrian traffic.

Map key: Green

Fair: Uneven and distressed surface that hinders mobility of the average pedestrian. The sidewalk contains surface cracks, vegetation overgrowth, or debris.

Map key: Yellow

Poor: Impassable to mobility impaired pedestrian; hinders mobility of average pedestrian. The sidewalk has deep cracking or buckling, significant vegetative overgrowth, poor drainage, bulging surface (due to tree roots) and / or debris such that pedestrian travel would be impeded.

Map key: Red

Gap: No sidewalk is present.



Greetings from Lanagan, Mo.

Lanagan and Ginger Blue Sidewalk Assessment All Conditions



Conditions

Good Condition:

Good Condition:
Sidewalk is free from cracking, buckling, gravel, or other significant flaws. Includes compliance to earlier standards of ADA compliance in that curb cuts and ramps exist, but may not adhere to slope standards, etc.

Fair Condition

Uneven and distressed surface that hinders mobility of the average pedestrian. The sidewalk contains surface cracks, vegetation overgrowth, or debris.

Poor Condition

Impassable to mobility impaired pedestrian; hinders mobility of average pedestrian. The sidewalk has deep cracking or buckling, significant vegetative overgrowth, poor drainage, bulging surface (due to tree roots) and / or debris such that pedestrian travel would be impeded. There gaps in sidewalk present.



0 0.2 0.4 0.8 Miles

Legend

-  Poor Conditions
-  Gaps
-  Roads
-  Lanagan and Ginger Blue

Figure 1 represents poor conditions in the City of Lanagan



Lanagan and Ginger Blue Sidewalk Assessment Poor Conditions



Conditions

Good Condition:
Sidewalk is free from cracking, buckling, gravel, or other significant flaws. Includes compliance to earlier standards of ADA compliance in that curb cuts and ramps exist, but may not adhere to slope standards, etc.

Fair Condition

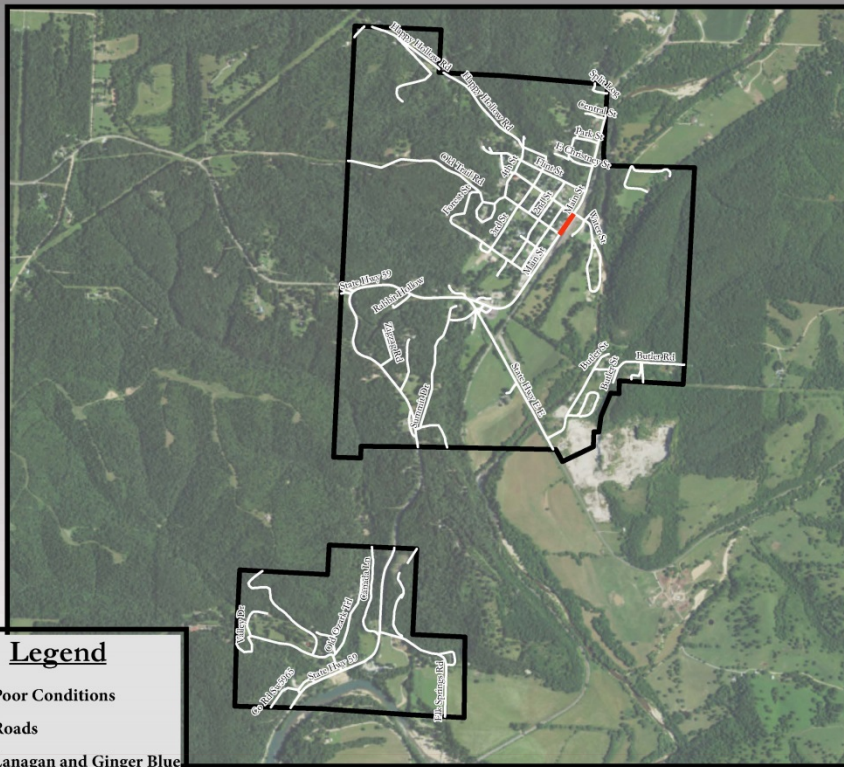
Uneven and distressed surface that hinders mobility of the average pedestrian. The sidewalk contains surface cracks, vegetation overgrowth, or debris.

Poor Condition

Impassable to mobility impaired pedestrian; hinders mobility of average pedestrian. The sidewalk has deep cracking or buckling, significant vegetative overgrowth, poor drainage bulging surface (due to tree roots) and / or debris such that pedestrian travel would be impeded. There gaps in sidewalk present.

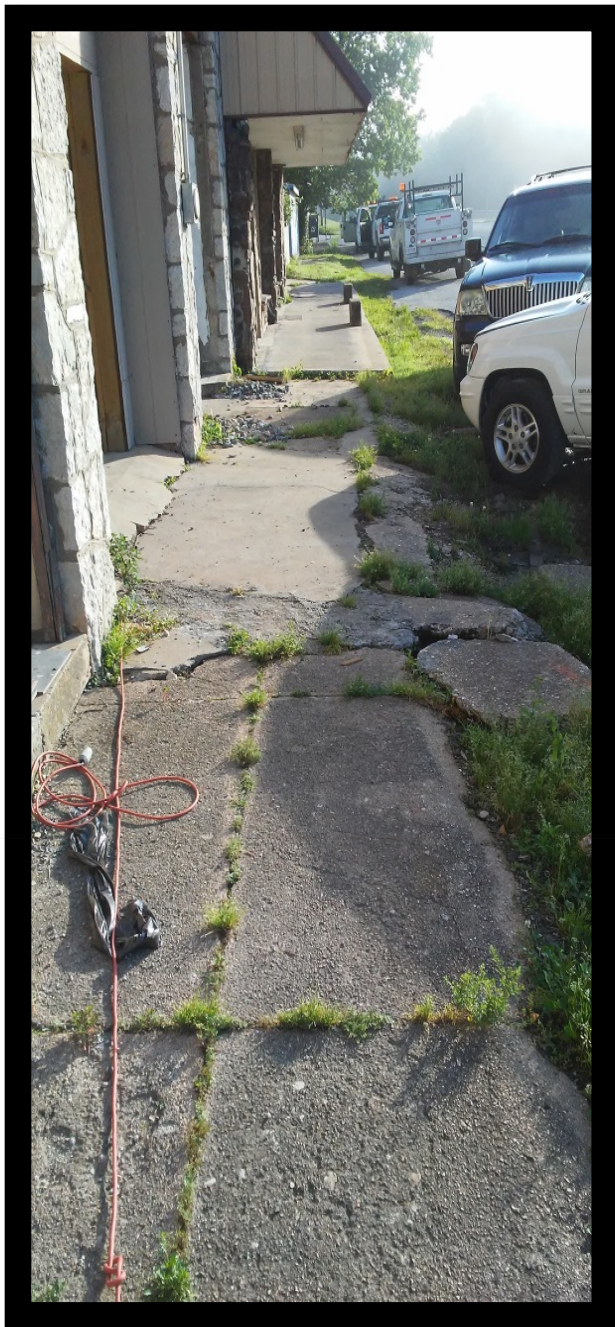
Legend

- Poor Conditions
- Roads
- Lanagan and Ginger Blue



0 0.2 0.4 0.8 Miles

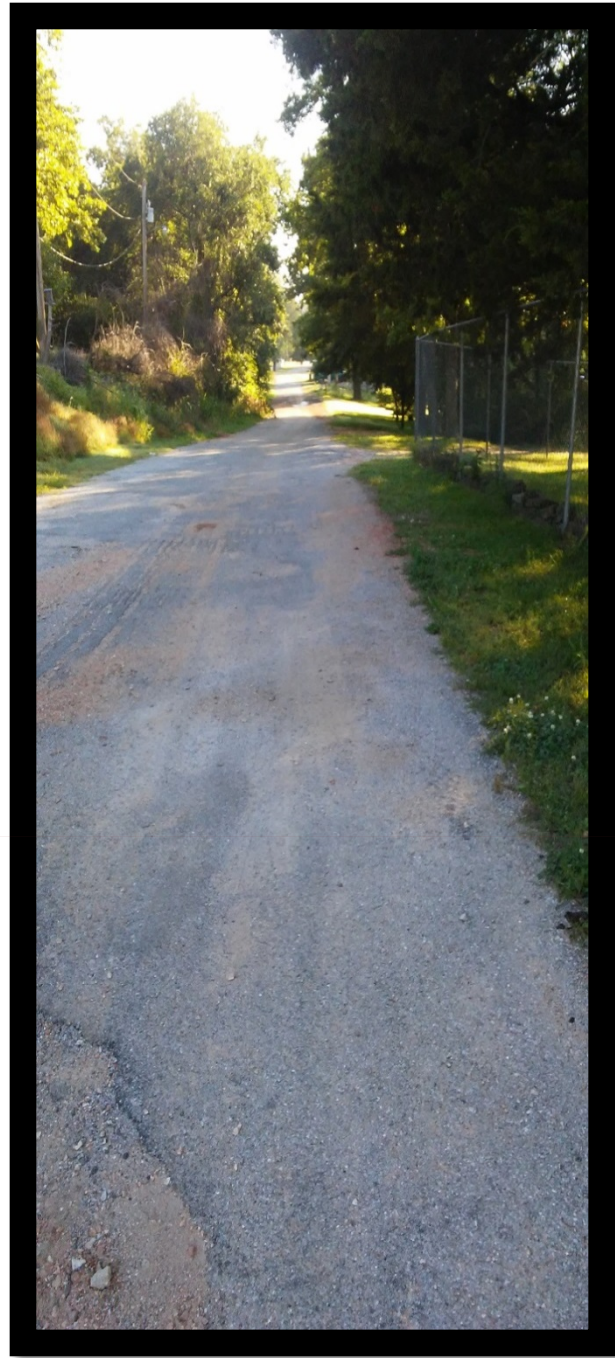
Figure 2 represents poor conditions in City of Lanagan



Highway 59/Main St. looking north from Forest St. Poor conditions.



Corner of 3rd St. and Forest looking east
on Forest St. No sidewalk



2nd st and Pebble St. looking East on
Pebble St. No sidewalk



2nd St. and Pebble St. looking north on 2nd St. No sidewalk



Sidewalk Survey

All communities in the Harry S Truman Coordinating Council Region were sent a survey to understand current conditions and future needs concerning sidewalks. Copies of those surveys that were returned are included in this section. In compiling information received from surveys and by individual inspection of sidewalks in each community the following general overview of condition was created.

Survey Feedback	General Inspection
Of the 10 surveys completed, 100% of respondents relay that existing sidewalks are in poor condition. Also, 100% of respondents state that there is an insufficient number of sidewalks in their city. Nearly 50% of respondents believe that sidewalks are important and another 50% believe they are important for reasons of beautification and health/wellness.	Of the 256 feet of total sidewalk in Lanagan 256 feet is in poor condition, which is consistent with survey feedback. Nearly seven miles of gaps exist where there are no sidewalks.





HSTCC Sidewalk Inventory Project

Lanagan, MO

May 17th, 2017

When most village, town, and city councils think about transportation, the focus lies heavily on streets, highways, and interstates. Increasingly, multi-modal transportation is coming to the forefront of the minds of citizens and government agencies. Multi-modal transportation includes ports, airports, and transit, but also includes sidewalks and trails. In an effort to enhance multi-modal transportation specifically concerning pedestrians and bicyclists, the Harry S Truman Coordinating Council is conducting a study of local offerings by jurisdiction in an effort to:

- Gauge needs and desires of local communities for sidewalks, trails, and other forms of pedestrian/cyclist-friendly infrastructure.
- Provide information to MoDOT concerning the existence of sidewalks, trails, etc. on state routes.
- Compile information for potential grant opportunities related to multi-modal infrastructure which could benefit Southwest Missouri.

Each jurisdiction is asked to complete the online survey. (If your jurisdiction does not currently have sidewalks, please indicate such on the survey.) Please enlist the help of your city officials, city managers, local roads supervisors/workers, and anyone else who may have information concerning local, existing sidewalks/trails. **We ask that you have completed the online survey by June 15nd.**

Your help is greatly appreciated in this information gathering. If you have any questions or need any assistance in completing this survey, please do not hesitate to contact me at 417-649-6400 or by email at nhill@hstcc.org

Sincerely,

Nikki Hill
Regional Transportation Planner/GIS

Link to survey:

www.surveymonkey.com/r/LanaganSWA



Thank you for taking time to fill out this short survey. Among towns and cities in southwest Missouri, sidewalks are consistently identified as a need for the region. This is part one of a two-part data collection, with the second part to take place in the fall of 2010. We appreciate your willingness to share information regarding the current status of sidewalks in your town.

City/Village Name: Lanagan

1. Does your jurisdiction currently have existing sidewalks? Yes No

**If sidewalks do not exist in your jurisdiction, please skip questions 2-7.

2. If sidewalks exist, does your jurisdiction have sidewalk codes or regulations? Yes No

3. If sidewalk codes and/or regulations exist, which of the following do they address?

Maintenance

Snow Removal

Construction as part of new development All of the above

4. Please rate the overall condition of your sidewalks.

Good

Fair

Poor

5. Please rate the adequacy of your sidewalks. (Is the number of existing sidewalks sufficient for current usage?)

More than Sufficient

Sufficient

Insufficient

6. Please rate the width of existing sidewalks.

Good

Fair

Poor

7. Do the majority of your existing sidewalks have curbs or ramps where they join the street?

Curbs

Ramps

Equal number

8. On a scale of 1 to 10, how important are sidewalks to your citizens?

Unimportant

1

2

3

4

5

6

7

8

Very Important

9

10

9. Does your jurisdiction have a school within its city limits? Yes No

10. Is your jurisdiction actively seeking to expand existing sidewalks:

At this time

In the future

We will not seek to expand.

11. If expansion is being considered, has your jurisdiction created a comprehensive sidewalk plan?

Yes, the plan has been completed.

Yes, the plan is currently in development.

No, but we are considering it.



12. If expansion is being considered, what areas of your jurisdiction are being targeted for sidewalk expansion/improvements?

If expansion is being considered, which of the following reasons best describes the city/village's motive?

Health/wellness

Beautification

Accessibility

Reducing environmental impact

Other: _____