

# McDonald County, Missouri - Hazard Mitigation Plan

## Bridge Map with Major Highways

### Legend

State Bridges in McDonal County (71)

● Structural Deficiency (12)

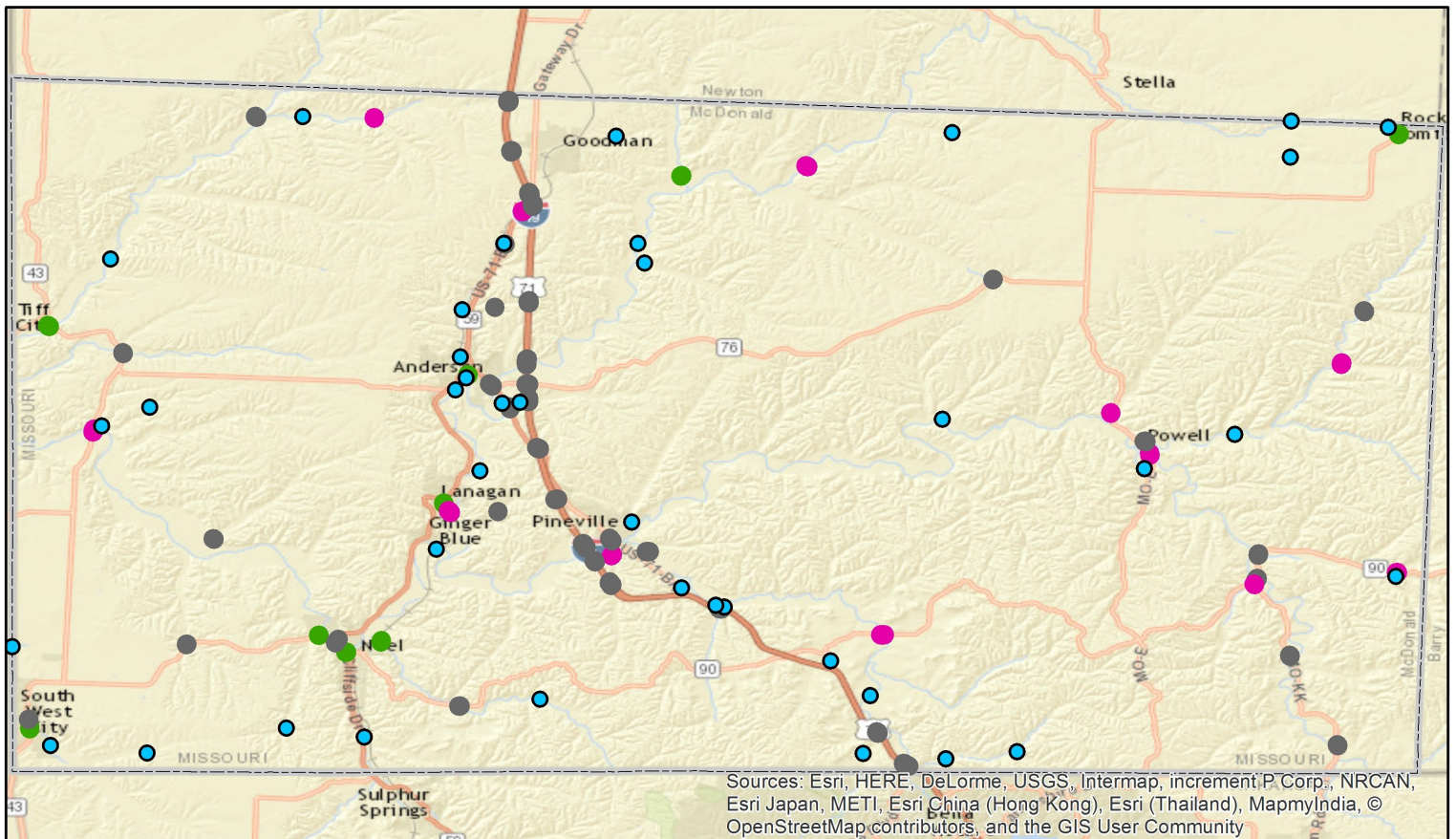
● Functional Deficiency (9)

● No Deficiency (50)

● Non-State Bridge (39)



0 2.5 5 10 Miles



Sources: Esri, HERE, DeLorme, USGS, Intermap, increment P Corp., NRCAN, Esri Japan, METI, Esri China (Hong Kong), Esri (Thailand), MapmyIndia, © OpenStreetMap contributors, and the GIS User Community



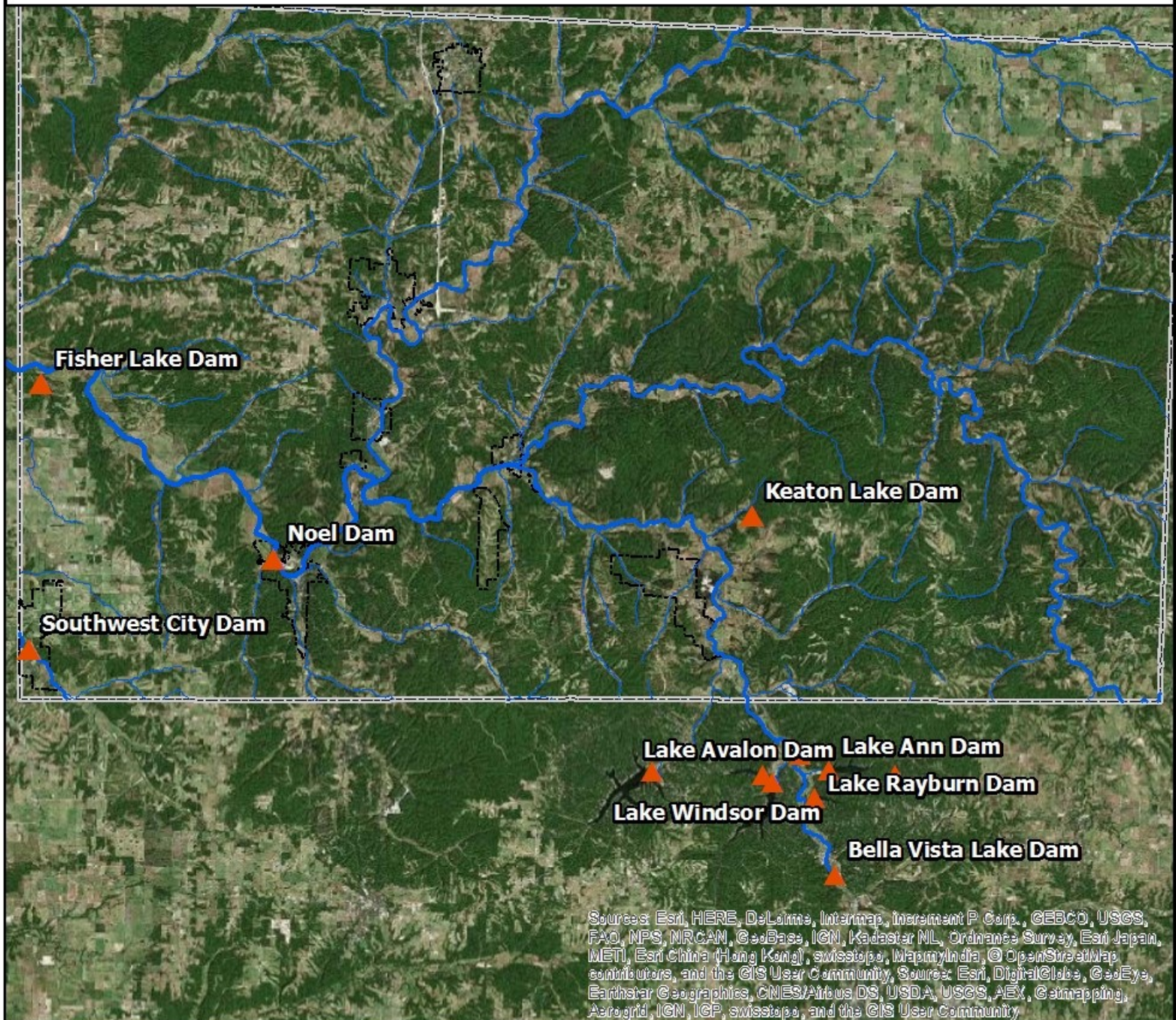
# McDonald County, Missouri - Hazard Mitigation Plan

## Dam Location Map

### Legend

- ▲ Dam Locations
- Streams & Rivers

0 2.5 5 10 Miles





# McDonald County, Missouri - Hazard Mitigation Plan

## Fire Protection Districts Map

### Legend

▲ Fire Stations

#### Fire Protection Districts

Anderson Fire District

Goodman Fire District

Lanagan Fire District

Noel Fire District

Pinville Fire District

Southwest City Fire District

Stella Fire District

Tiff City Fire District

Washburn Fire District

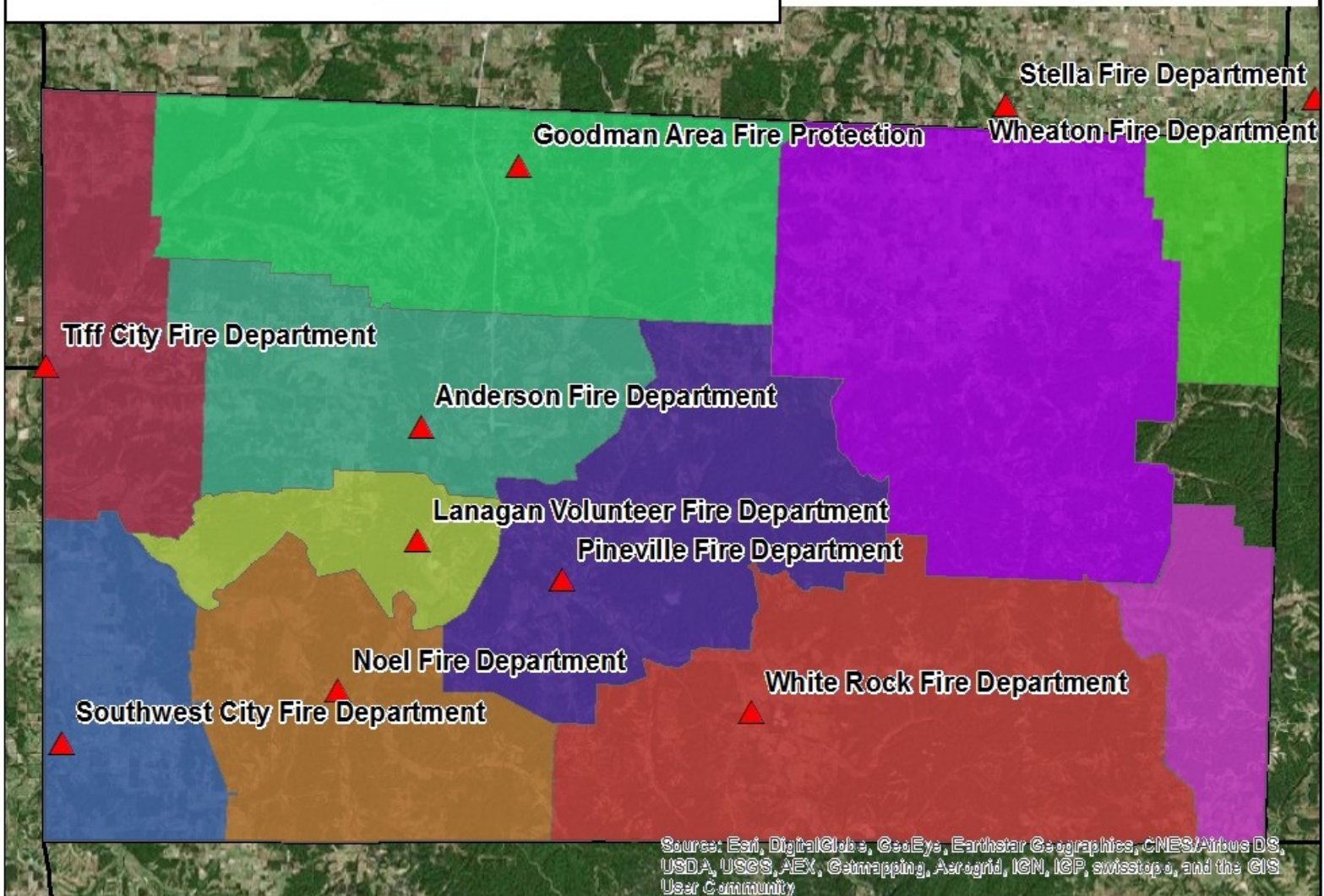
Wheaton Fire District

White Rock Fire District

N



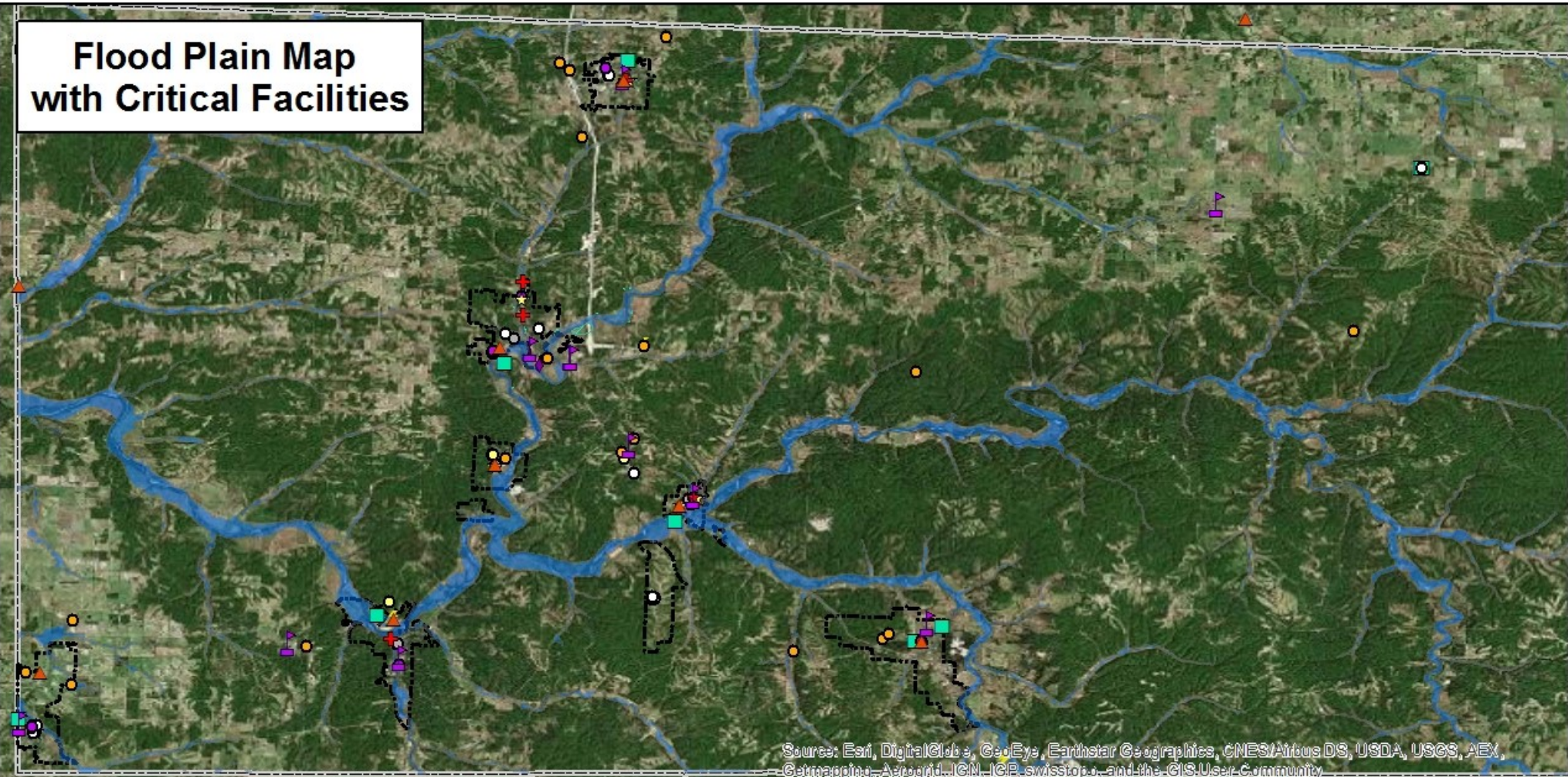
0 2.5 5 10 Miles





# McDonald County, Missouri - Hazard Mitigation Plan

## Flood Plain Map with Critical Facilities



Source: Esri, DigitalGlobe, GeoEye, Earthstar Geographics, CNES/Airbus DS, USDA, USGS, AEX, Getmapping, Aerogrid, IGN, IGP, swisstopo, and the GIS User Community

### Map Legend

#### Flood Plain

- 1 % Flood Plain
- 0.2 % Flood Plain

#### Critical Facilities

- ★ Emergency Management Facility
- ▲ Fire Station
- ☆ Law Enforcement

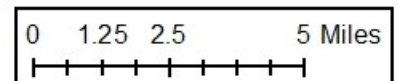
#### Critical Facilities

- City Government
- County Government
- Government or Military (1 - A)\*
- Communication Tower
- Information or Communication Facility
- ⚡ Energy Facility

#### Critical Facilities

- + Healthcare Facility (2 - P, A)\*
- Childcare Facility (2 - A)\*
- ◆ Nursing Home
- Water Supply or Treatment (3 - J, N, P)\*
- Water Tower
- ▢ School (1 - P)\*

\* Numbers in ( ) represent the number of that critical facility type partially or fully located inside the 1% flood plain. Letters represent the city the critical facility is located in: A=Anderson, J=Jane, N=Noel, P=Pineville.



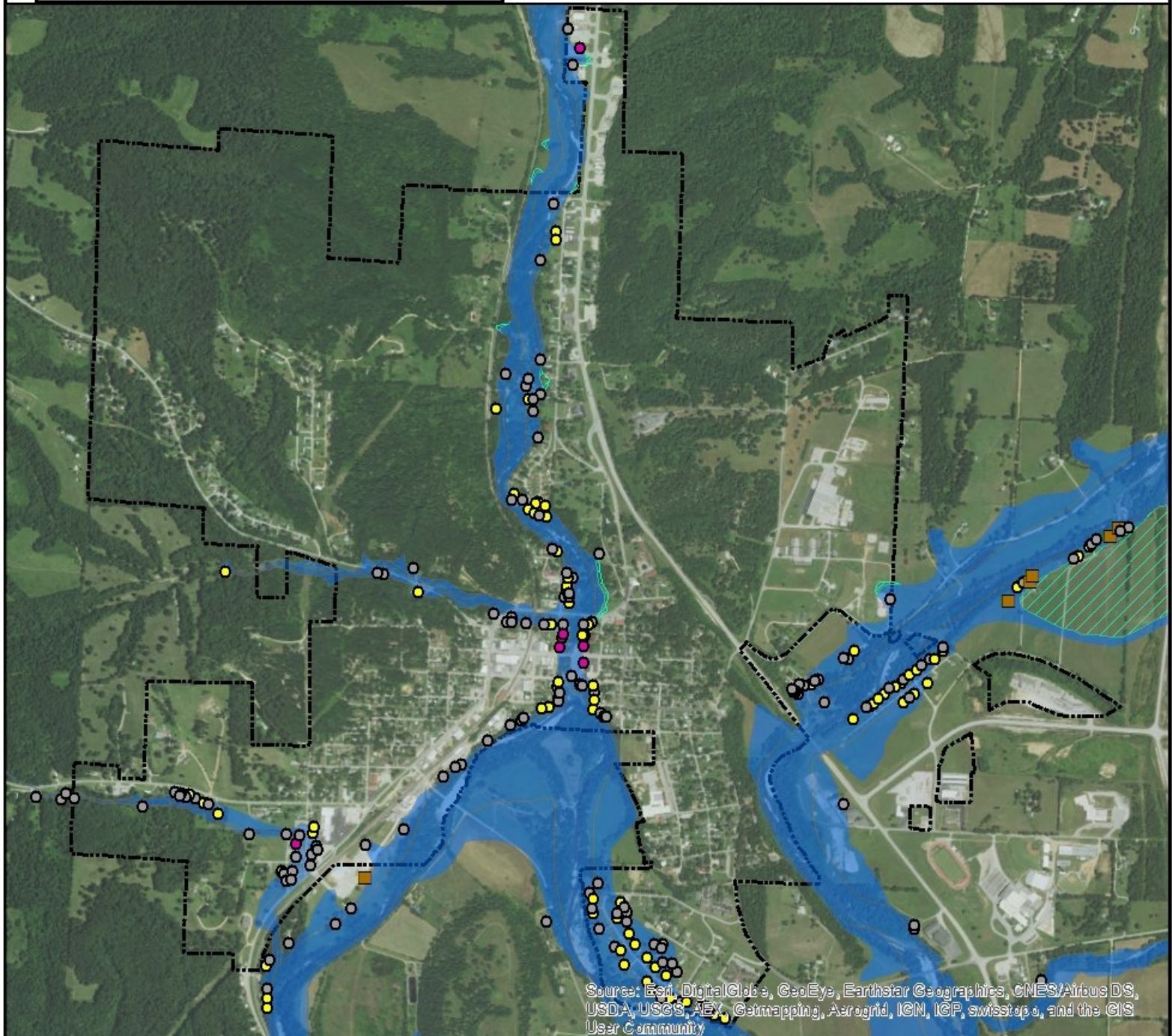
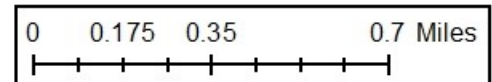
Harry S Truman  
Coordinating Council



# Anderson Flood Plain Map

## Structures within 1% Floodplain & Anderson City limits

- Industrial Facility (0)
- Agriculture or Livestock Structure (10)
- Commercial Structure (7)
- Residential Structure (53)
- Building General (94)



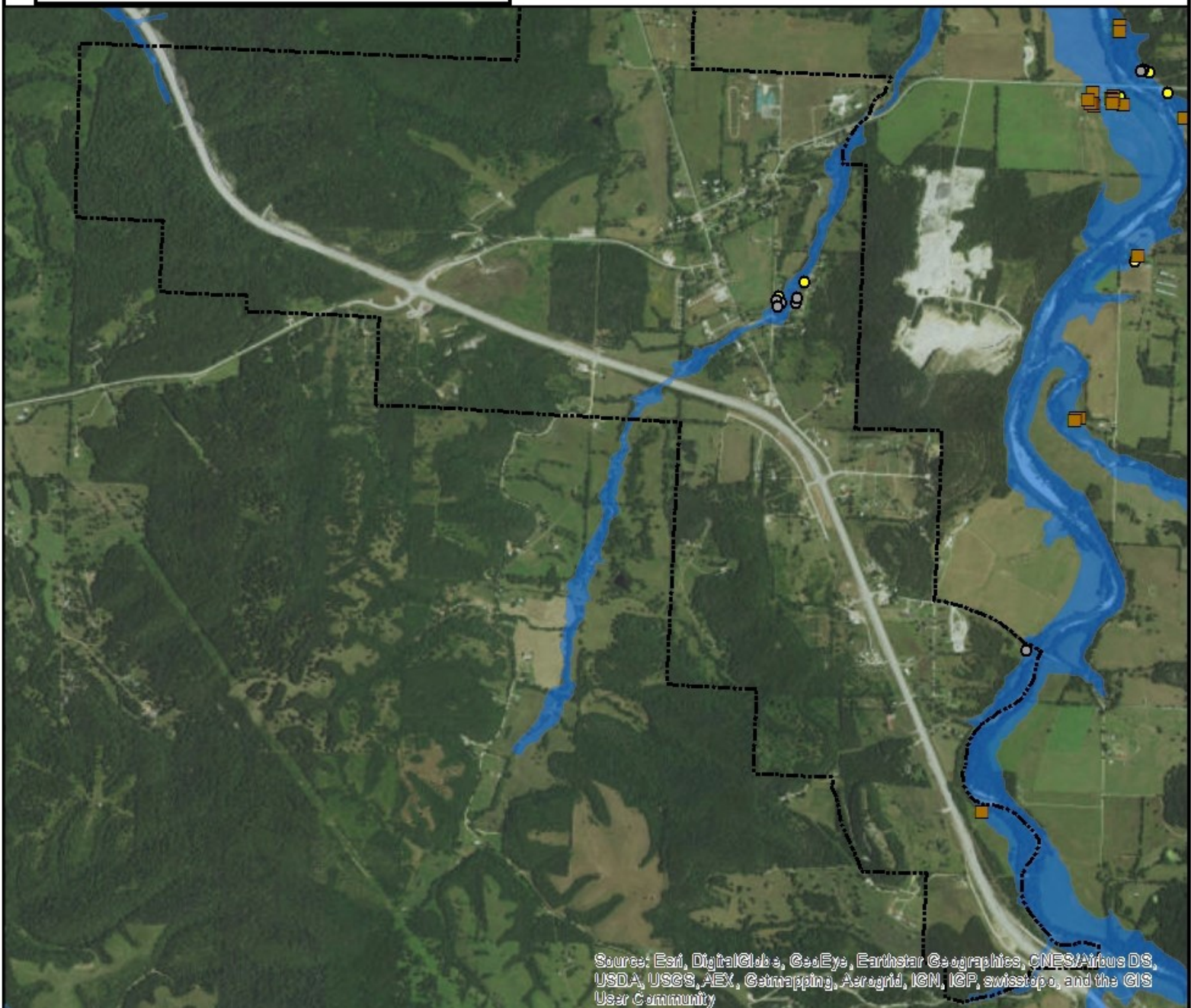
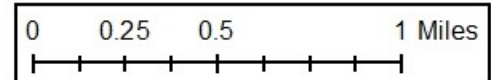
Source: Esri, DigitalGlobe, GeoEye, Earthstar Geographics, CNES/Airbus DS, USDA, USGS, AeroX, Getmapping, Aerogrid, IGN, IGP, swisstopo, and the GIS User Community



# Jane Flood Plain Map

## Structures within 1% Floodplain & Jane City limits

- Industrial Facility (0)
- Agriculture or Livestock Structure (1)
- Commercial Structure (0)
- Residential Structure (3)
- Building General (6)



Sources: Esri, DigitalGlobe, GeoEye, Earthstar Geographics, CNES/Airbus DS, USDA, USGS, AEX, Geomapping, AerGRID, IGM, IGP, swisstopo, and the GIS User Community

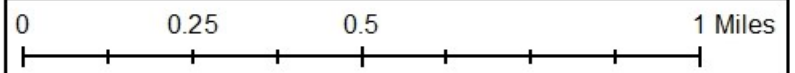


# Lanagan Flood Plain Map

## Structures within 1% Floodplain & Lanagan City limits

- Industrial Facility (0)
- Agriculture or Livestock Structure (1)
- Commercial Structure (0)
- Residential Structure (13)
- Building General (26)

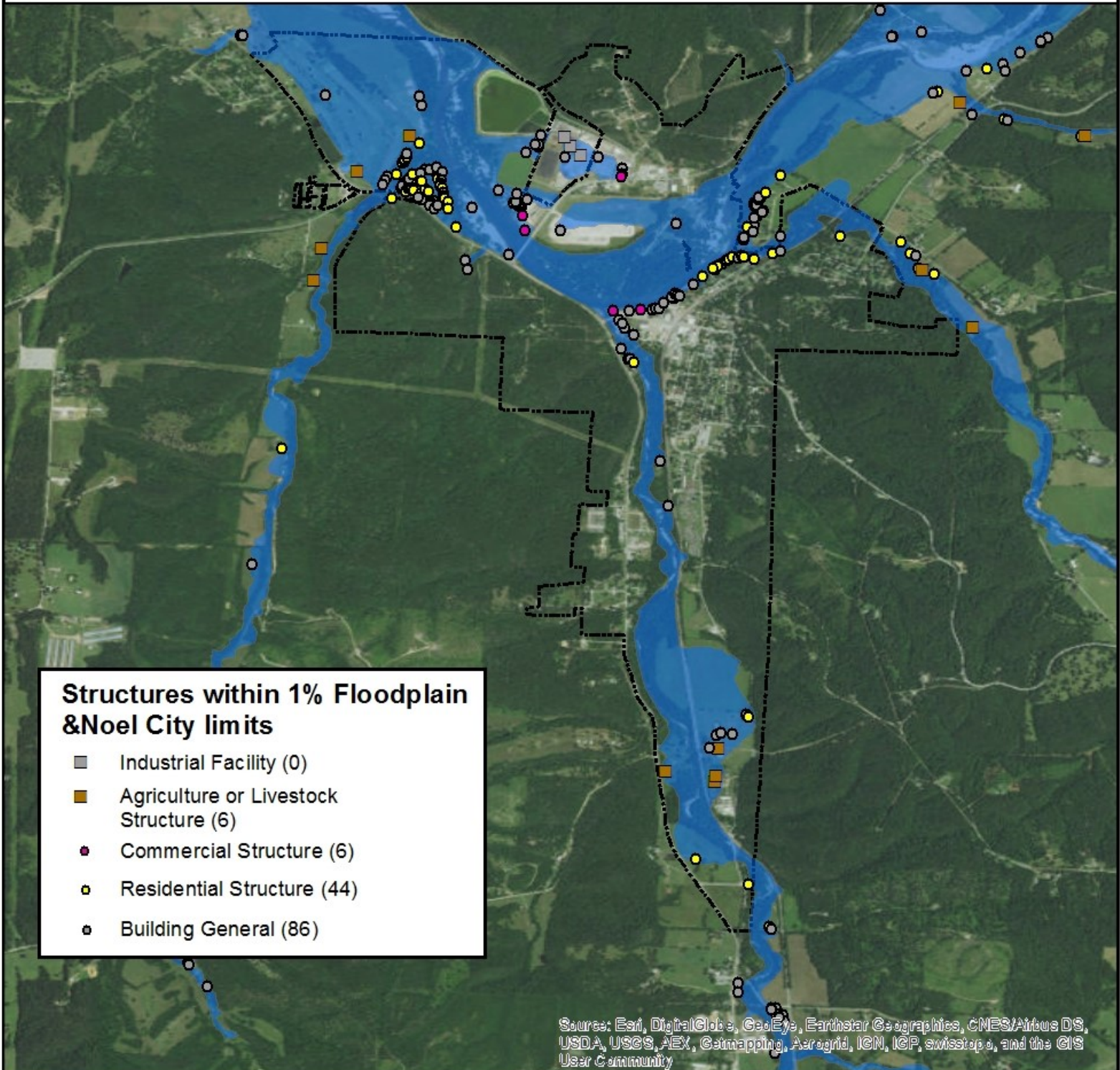
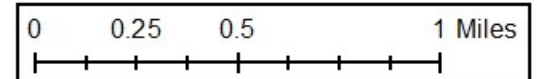
N



Sources: Esri, DigitalGlobe, GeoEye, Earthstar Geographics, CNES/Airbus DS, USDA, USGS, AEX, Getmapping, Aerogrid, IGN, IGP, swisstopo, and the GIS User Community



# Noel Flood Plain Map



## Structures within 1% Floodplain & Noel City limits

- Industrial Facility (0)
- Agriculture or Livestock Structure (6)
- ◆ Commercial Structure (6)
- Residential Structure (44)
- Building General (86)

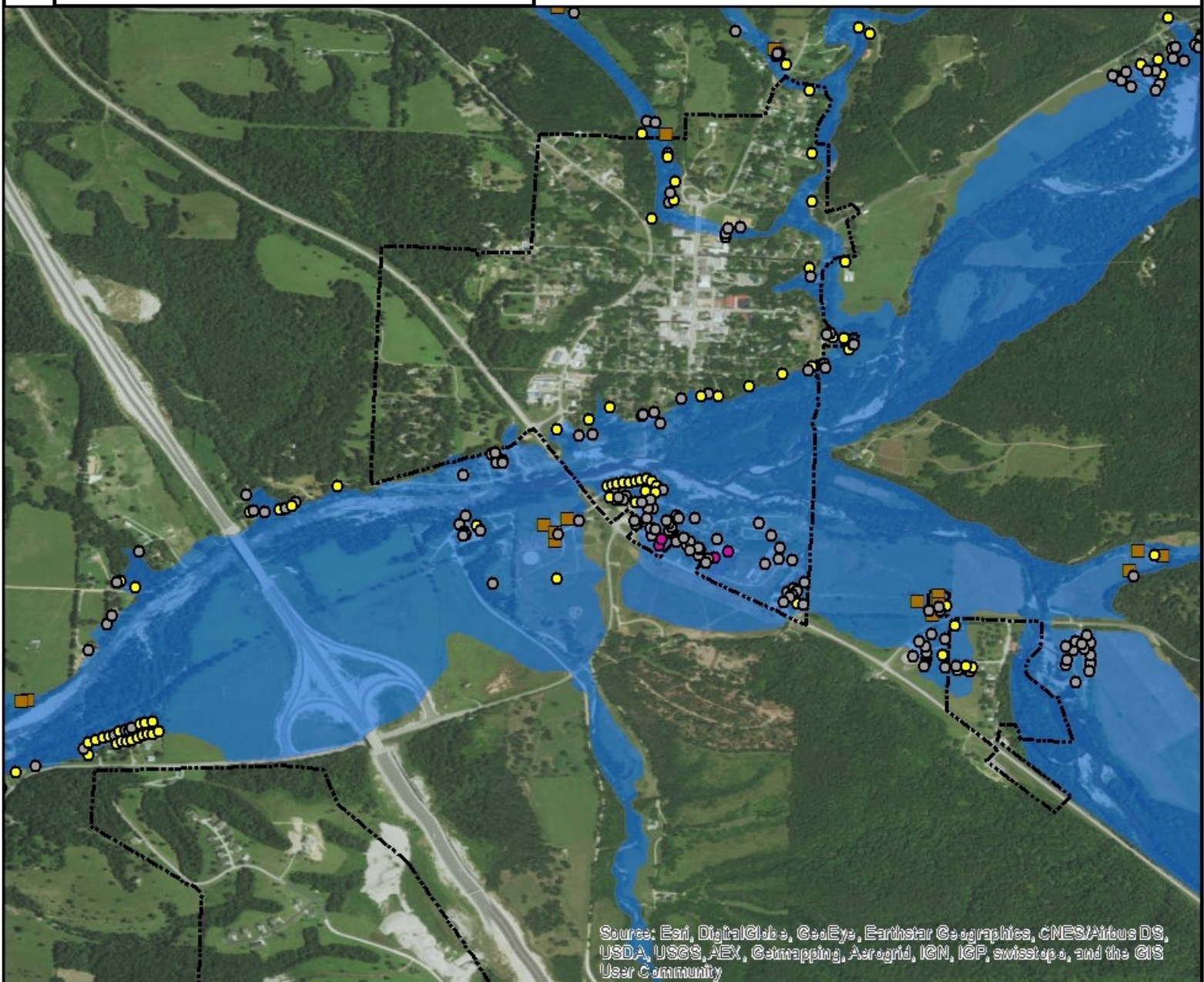
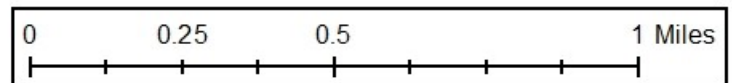
Sources: Esri, DigitalGlobe, GeoEye, Earthstar Geographics, CNES/Airbus DS, USDA, USGS, AEI, Getmapping, Aerogrid, IGN, IGP, swisstopo, and the GIS User Community



# Pineville Flood Plain Map

## Structures within 1% Floodplain & Pineville City limits

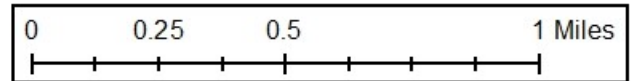
- Industrial Facility (0)
- Agriculture or Livestock Structure (3)
- Commercial Structure (4)
- Residential Structure (39)
- Building General (64)



Source: Esri, DigitalGlobe, GeoEye, Earthstar Geographics, CNES/Airbus DS, USDA, USGS, AEX, Geomapping, Aerogrid, IGN, IGP, swisstopo, and the GIS User Community



# Southwest City Flood Plain Map



## Structures within 1% Floodplain & Southwest City limits

- Industrial Facility (0)
- Agriculture or Livestock Structure (5)
- ◆ Commercial Structure (2)
- ◆ Residential Structure (4)
- Building General (33)

Source: Esri, DigitalGlobe, GeoEye, Earthstar Geographics, CNES/Airbus DS, USDA, USGS, AEX, Getmapping, Aerogrid, IGN, IGP, swisstopo, and the GIS User Community

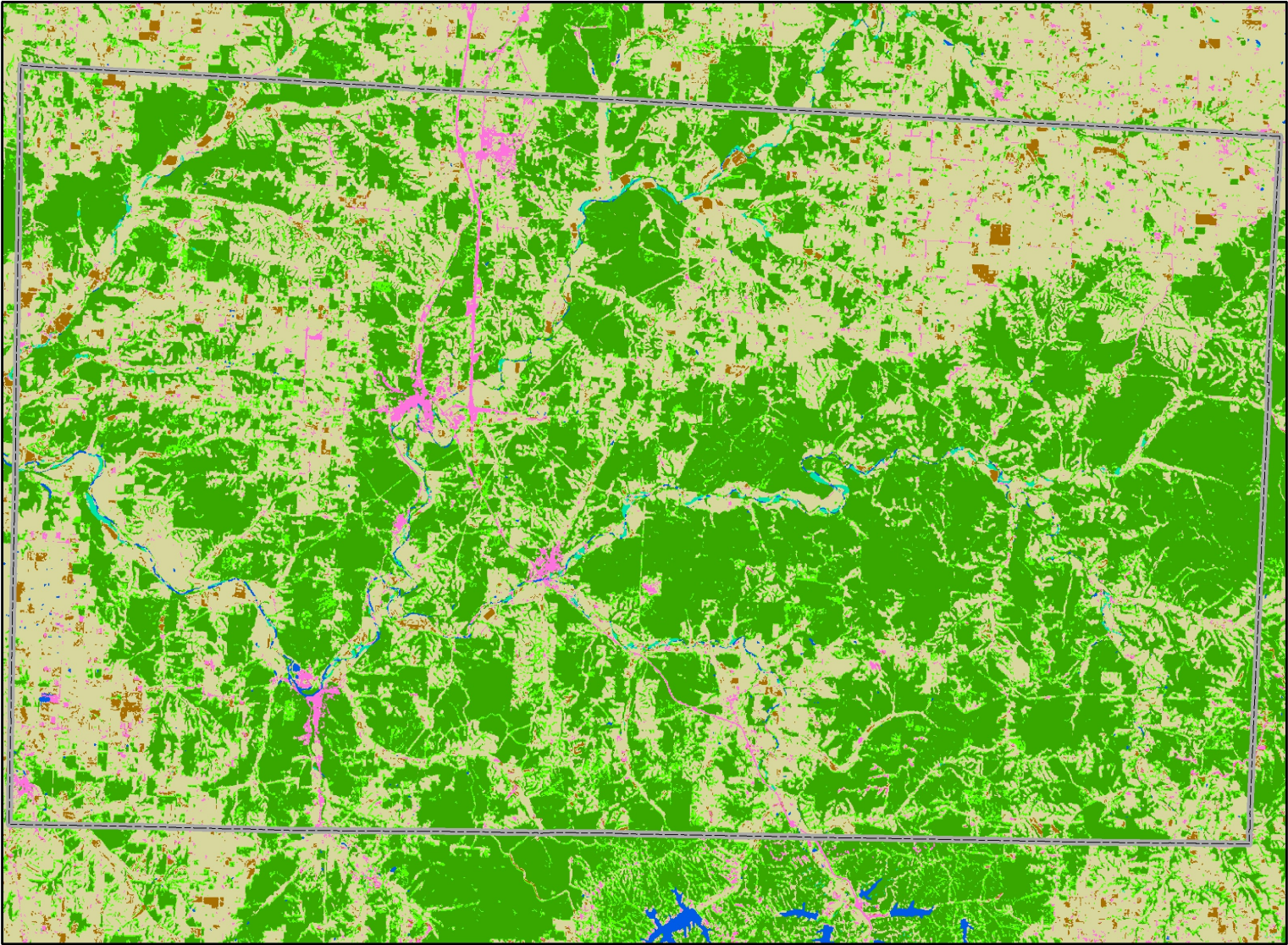
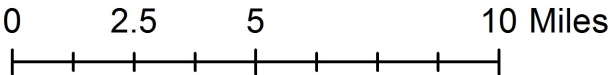


# McDonald County, Missouri - Hazard Mitigation Plan

## Land Use Cover

### Land Use Legend

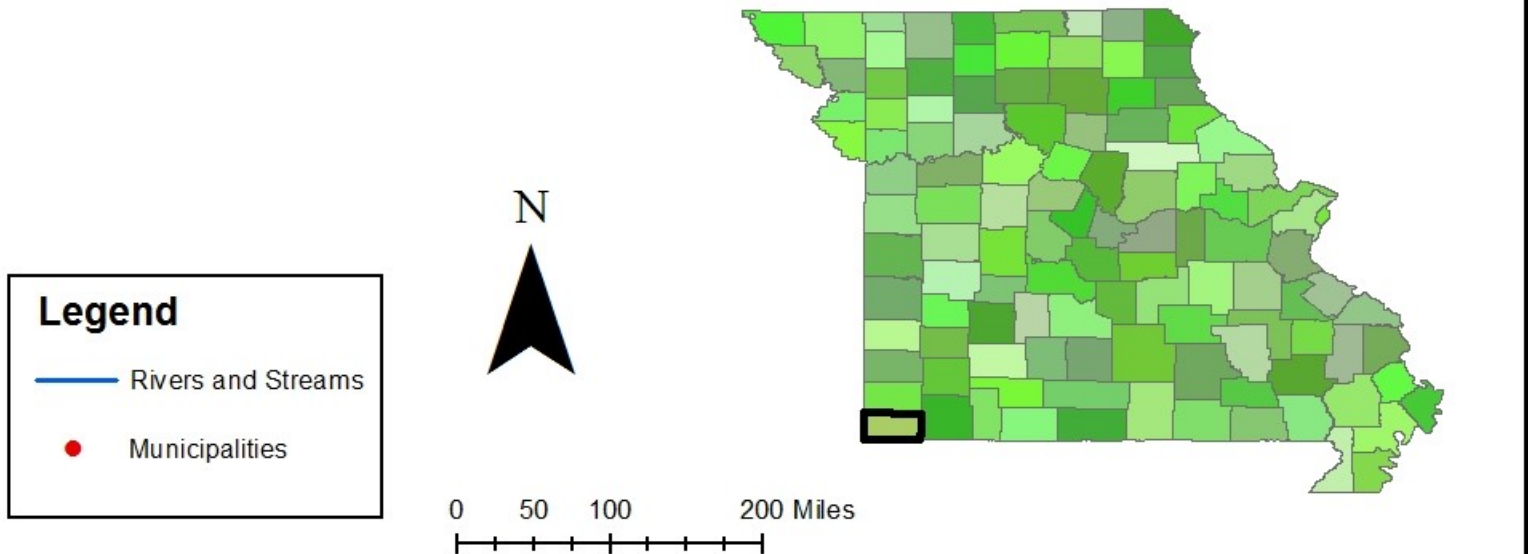
- Unclassified
- Deciduous Forest
- Mixed Forest
- Grassland/Pastureland
- Cropland
- Wetland
- Open Water
- Impervious/Urban





# McDonald County, Missouri - Hazard Mitigation Plan

## County Profile





# McDonald County, Missouri - Hazard Mitigation Plan

## School District Map

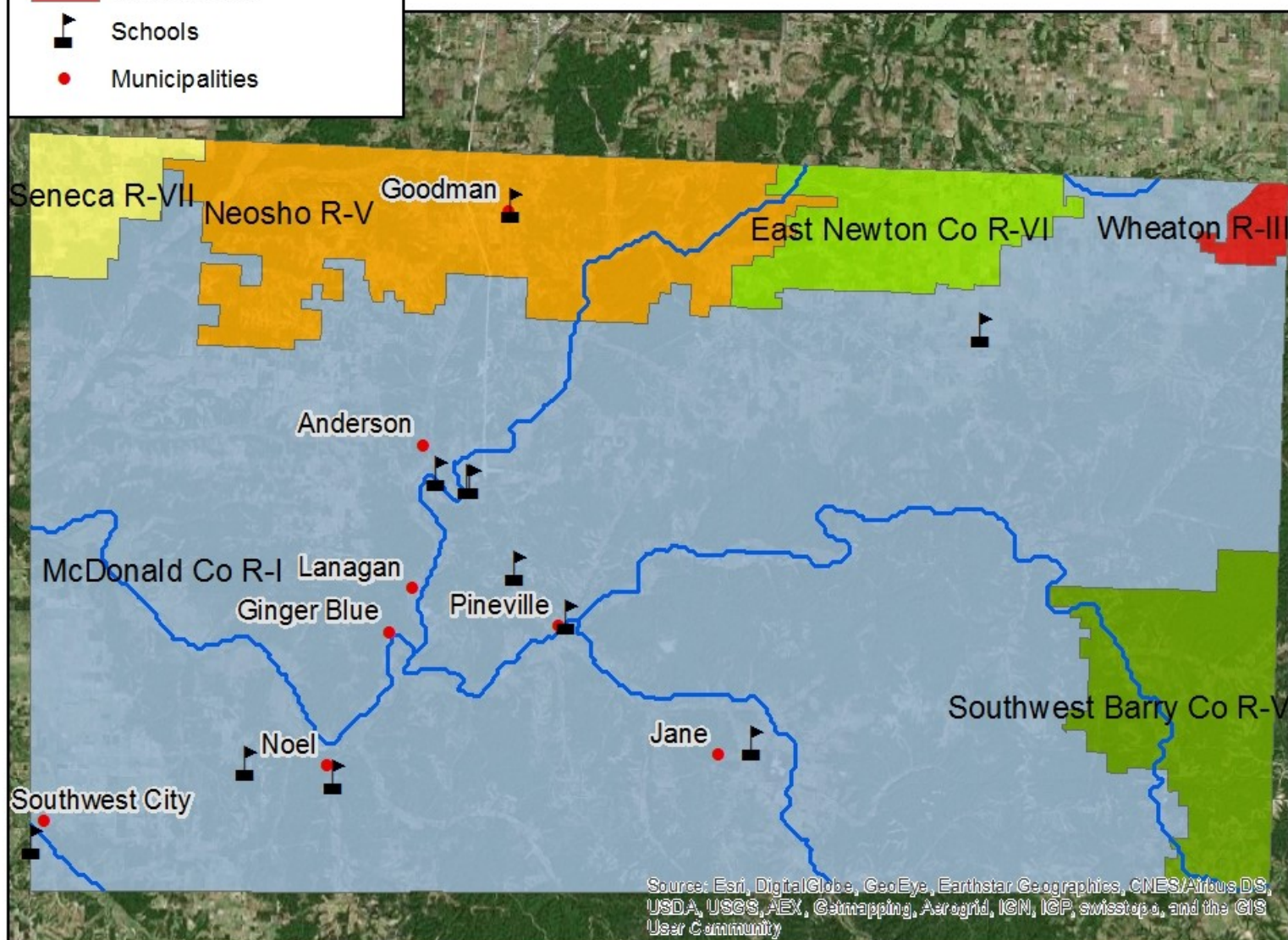
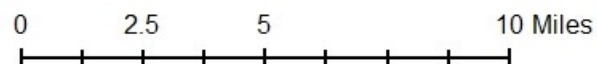
### Legend

#### School Districts

##### district\_n

- East Newton Co R-VI
- McDonald Co R-I
- Neosho R-V
- Seneca R-VII
- Southwest Barry Co R-V
- Wheaton R-III

- Schools
- Municipalities





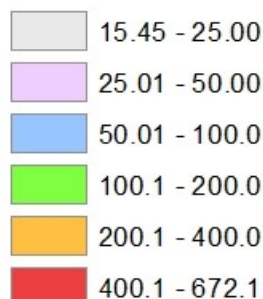
# McDonald County, Missouri - Hazard Mitigation Plan

## Population Density Map

### Legend

#### Population Density Municipalities

##### POP10 / SQMI



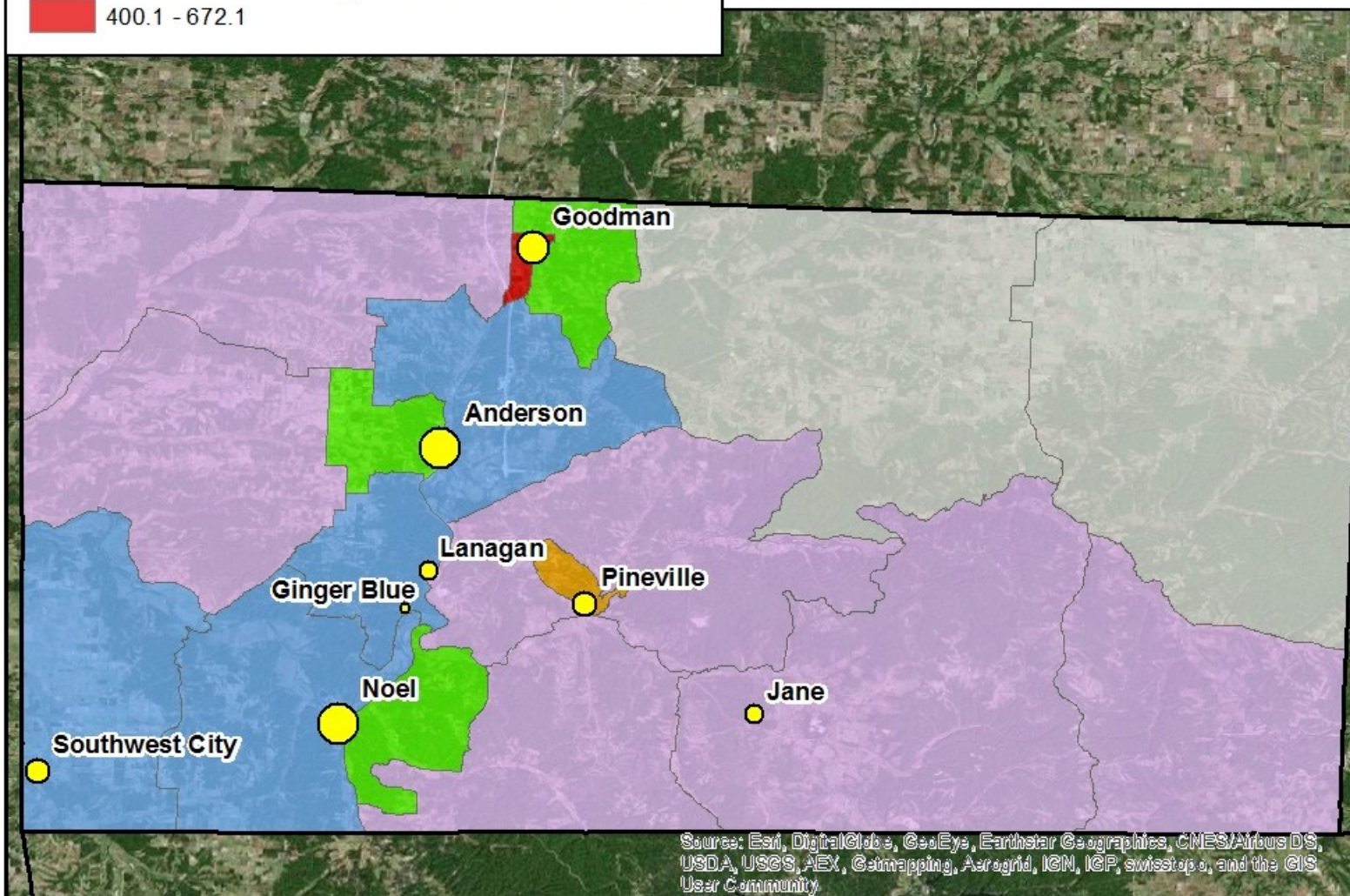
##### POP10



N



0 2.5 5 10 Miles





# McDonald County, Missouri - Hazard Mitigation Plan

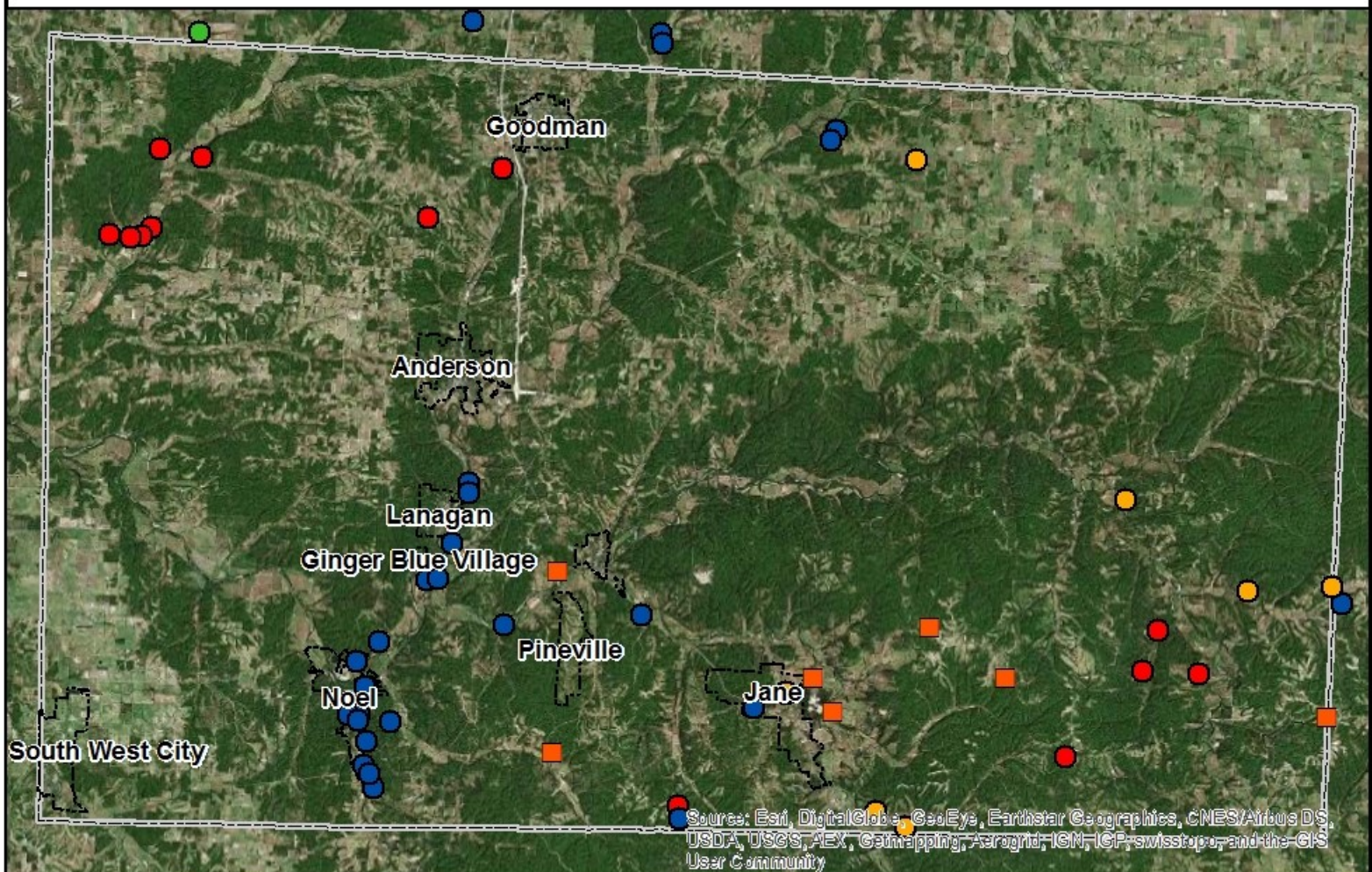
## Sinkhole Locations and Mining Activity

### Legend

-  Sinkhole
-  Surface Mine
-  Underground Mine
-  Underground Mine; Crusher
-  Unknown Mine



0 2.5 5 10 Miles



Sources: Esri, DigitalGlobe, GeoEye, Earthstar Geographics, CNES/Airbus DS, USDA, USGS, AEX, Comapping, Aerogrid, IGN, IGP, swisstopo, and the GIS User Community