

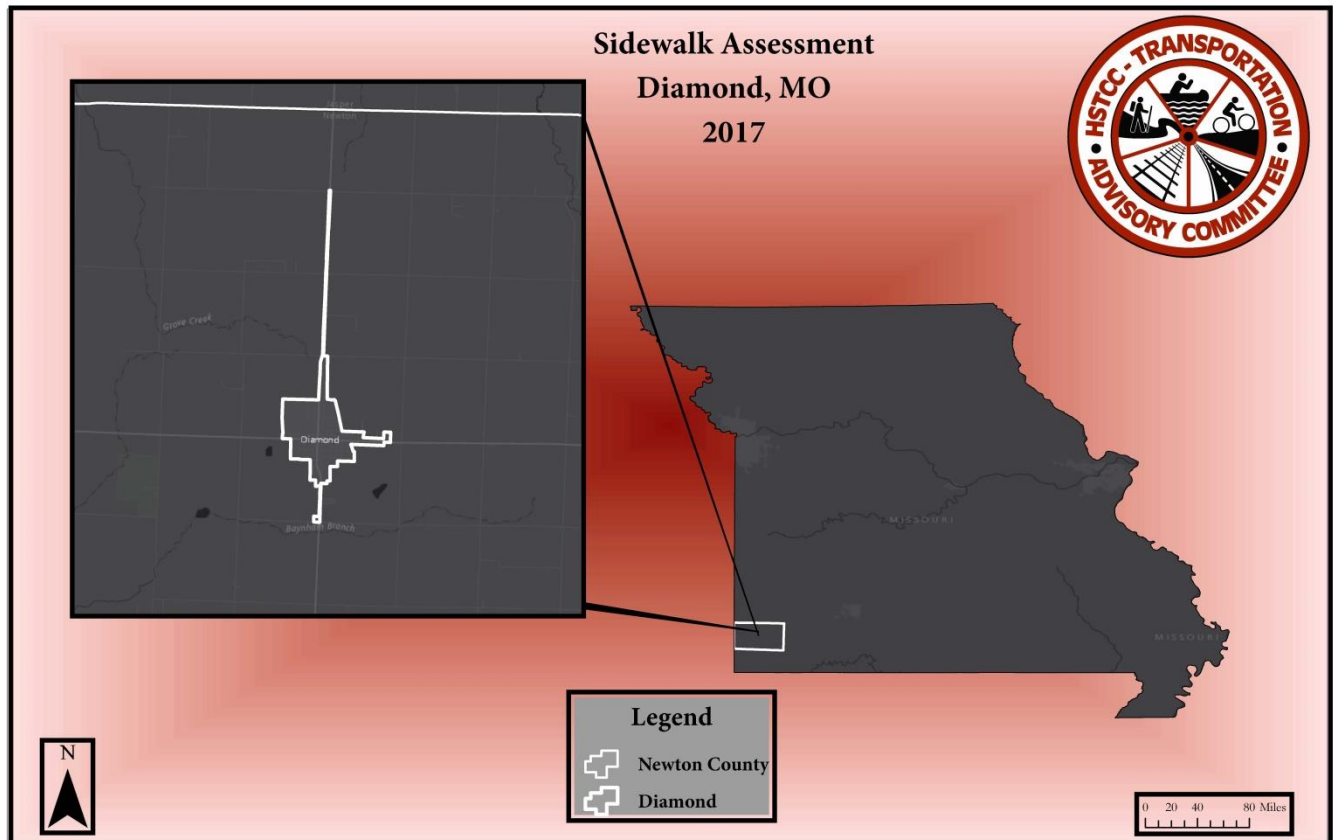
800 E Pennell St, Carl Junction, MO  
64834



Phone: 417-649-6400  
Fax 417-649-6409

## Sidewalk Assessment

Diamond, MO  
2017





## Sidewalk Assessment

Diamond, MO  
2017

Diamond is situated in the northern part of Newton Co., near the center east and west. It is on the prairie just on the east side of "Round Grove". The town began with the log home of Dr. And Mrs. Leathers and on the west, where there was a patch of timber know as Round Grove. Diamond was first called "Center," changing its name in 1883 when the village acquired its first post office. Diamond is primarily renowned as the birthplace of George Washington Carver. The area was named for a diamond-shaped tract of land near the original town site. Mining was historically the primary industry in Diamond.

The incorporated community of Diamond, MO is included in the 2017 assessment. The sidewalks in the City of Diamond were assessed on their current conditions in May and June by staff at the Harry S Truman Coordinating Council and a student intern from Missouri Southern State University. The data collected by the student intern was reviewed by HSTCC staff. The chart below depicts the overall condition of sidewalks in the city:

Conditions in Linear Feet					
	Good	Fair	Poor	No Sidewalk	Total Sidewalk
Diamond, MO	1652 feet	75 feet	1002 feet	52228 feet	2729 feet





The following criteria were used in assessing conditions. These assessment criteria are being used for assessments by all Regional Planning agencies across Missouri.

**Good:** Unlikely to hinder mobility of the average pedestrian. The sidewalk is free from significant cracking, buckling, gravel surfaces, or other debris which would impede pedestrian traffic.

**Map key: Green**

**Fair:** Uneven and distressed surface that hinders mobility of the average pedestrian. The sidewalk contains surface cracks, vegetation overgrowth, or debris.

**Map key: Yellow**

**Poor:** Impassable to mobility impaired pedestrian; hinders mobility of average pedestrian. The sidewalk has deep cracking or buckling, significant vegetative overgrowth, poor drainage, bulging surface (due to tree roots) and / or debris such that pedestrian travel would be impeded.

**Map key: Red**

**Gap:** No sidewalk is present.

**Map Key: Gray**



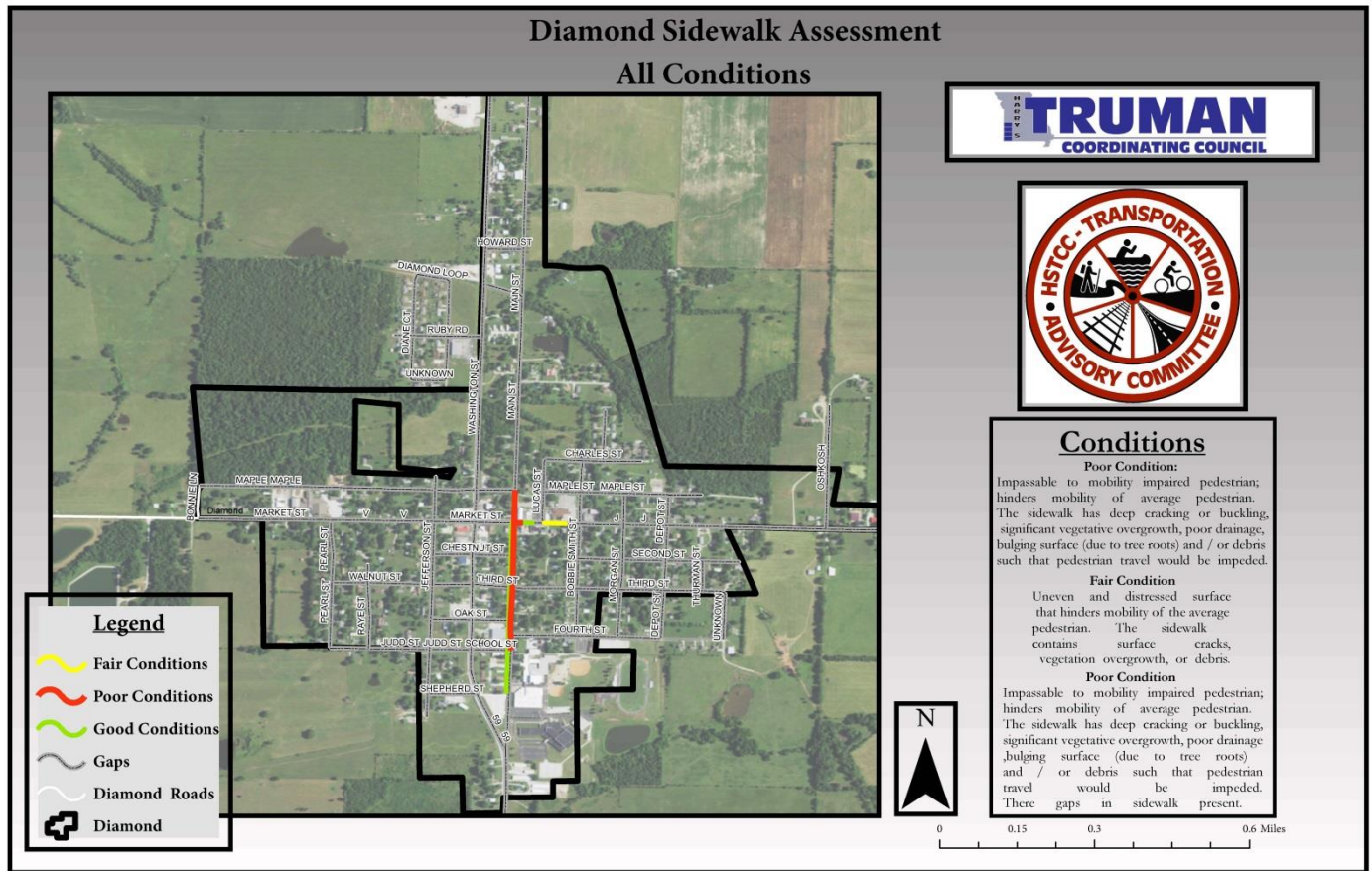


Figure 1 represents all sidewalk conditions in the City of Diamond, MO



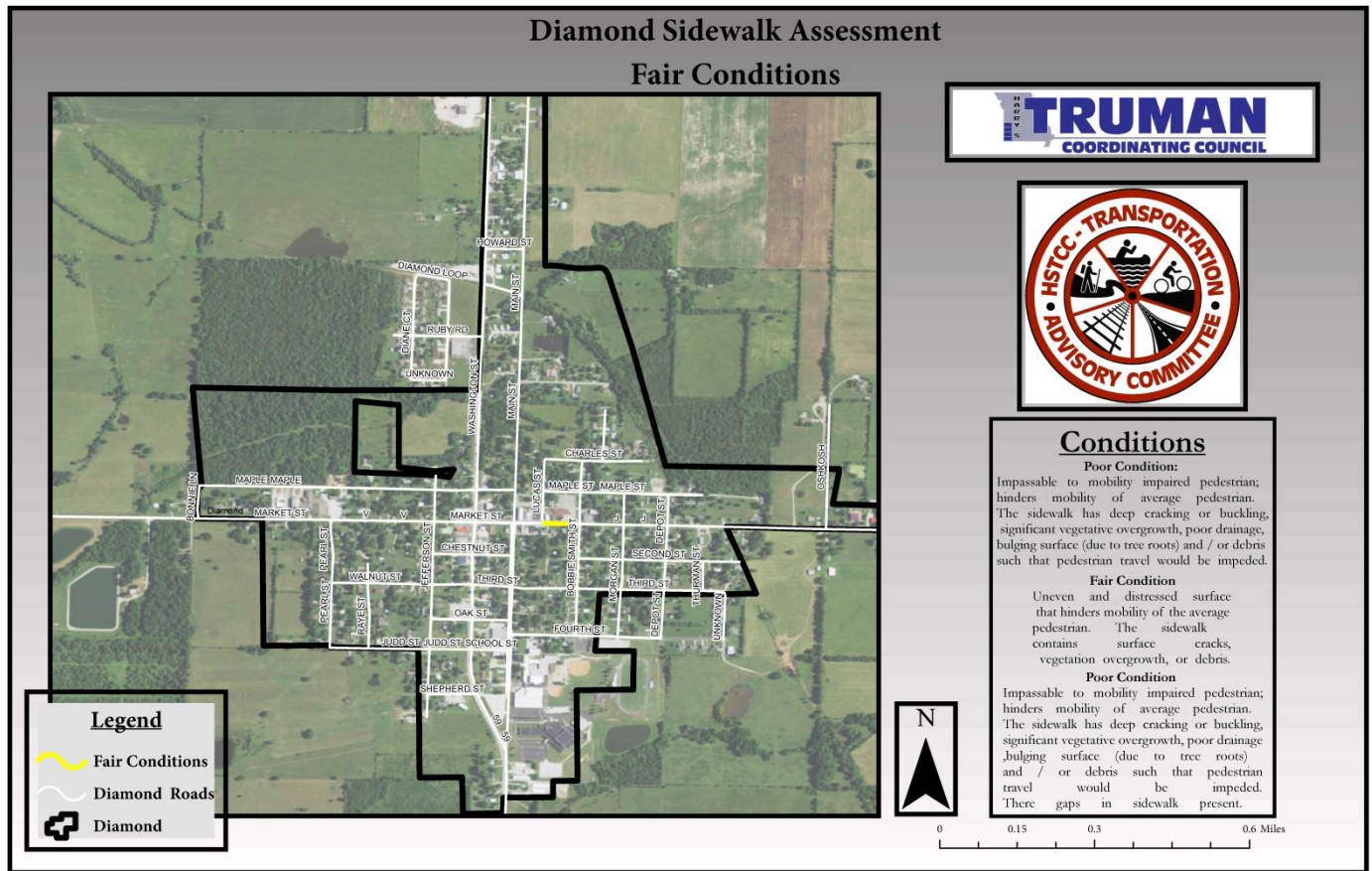


Figure 2 represent fair conditions in the City of Diamond, MO

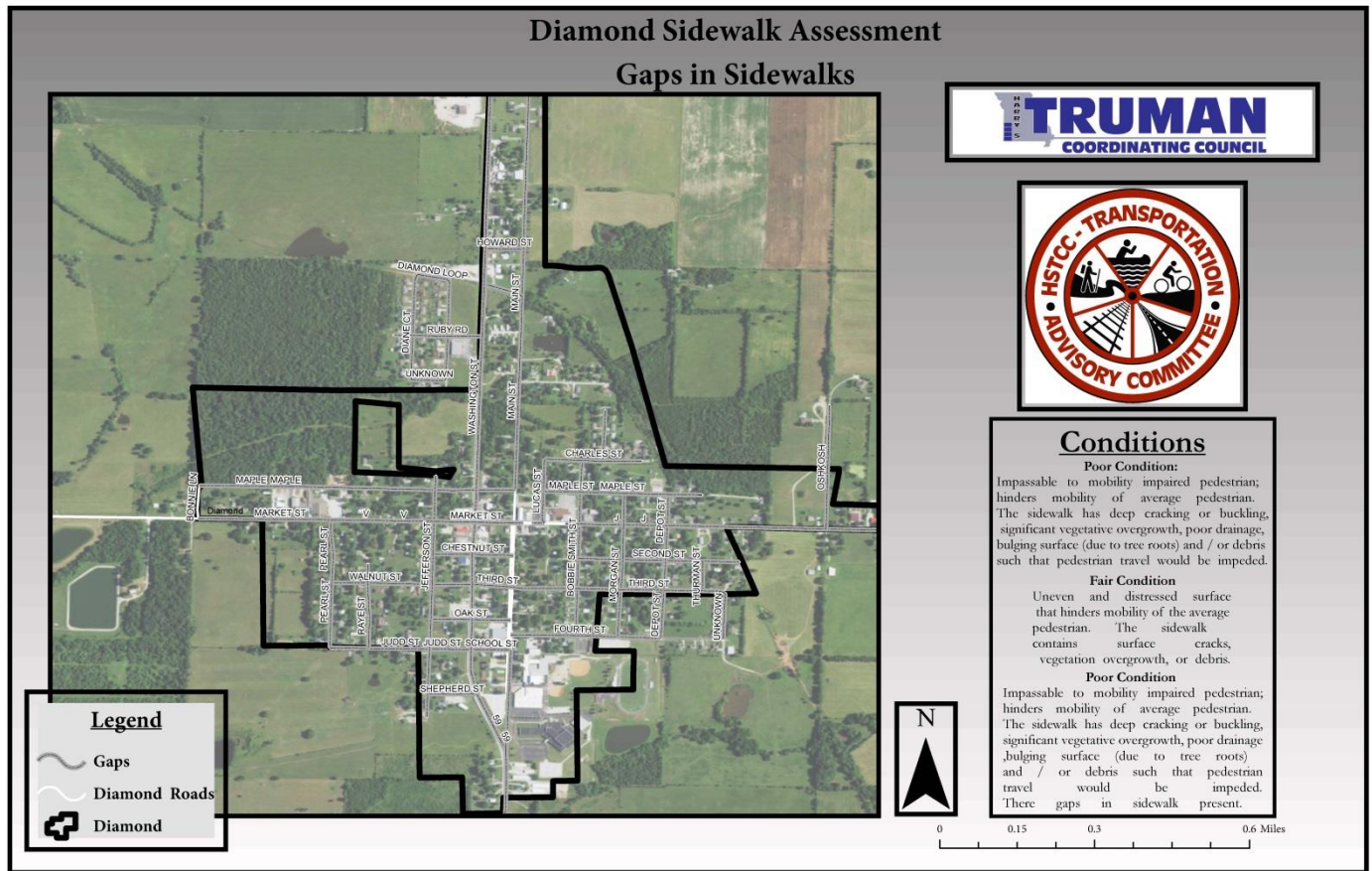


Figure 3 represents gaps in sidewalks in the City of Diamond, MO

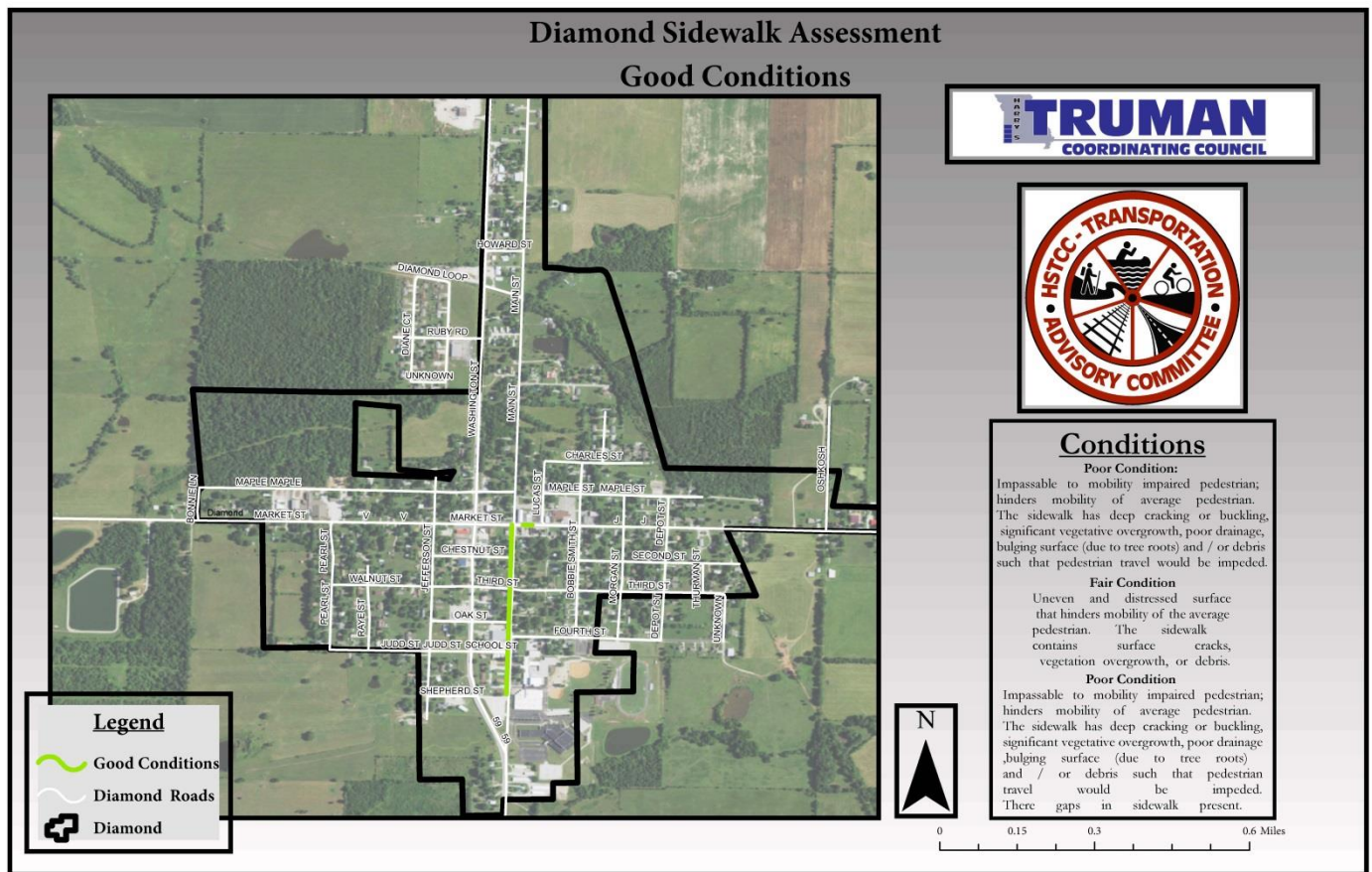


Figure 4 represents good conditions in the City of Diamond, MO



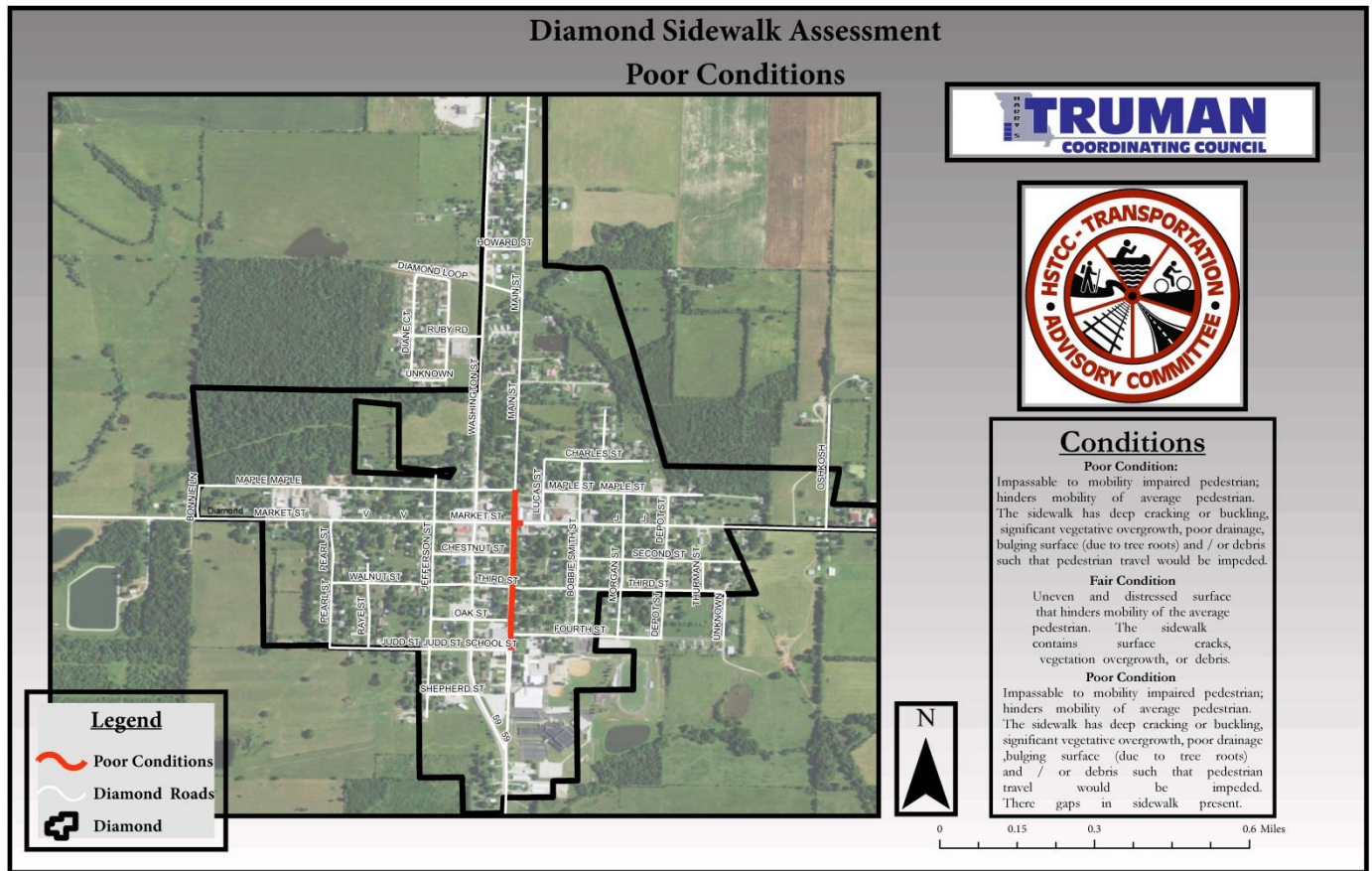
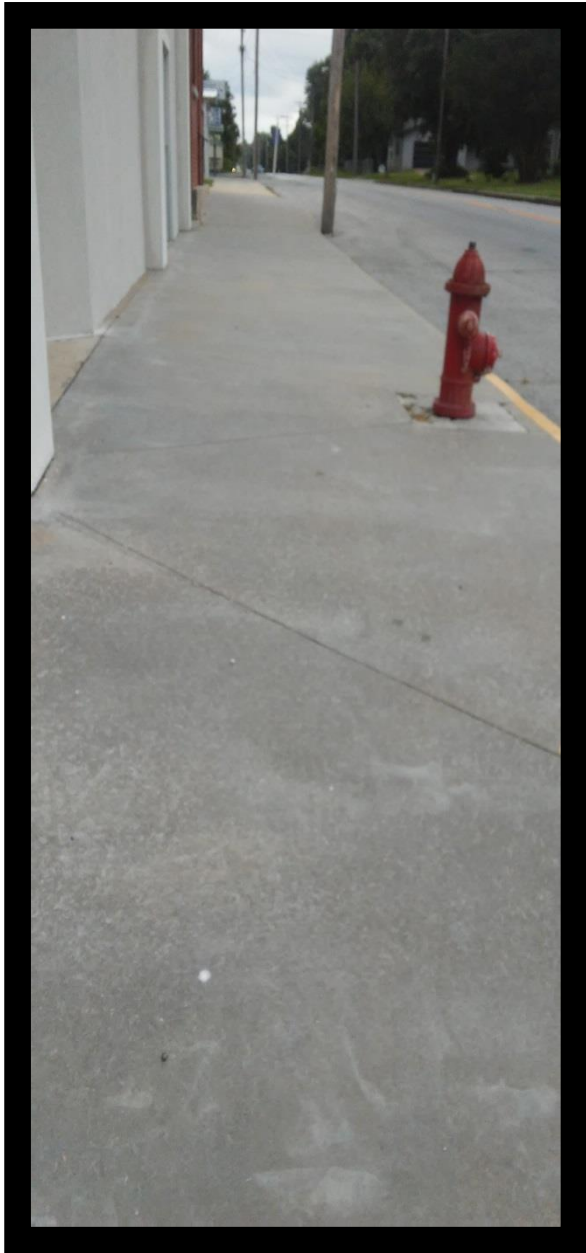


Figure 5 represents poor conditions in the City of Diamond, MO

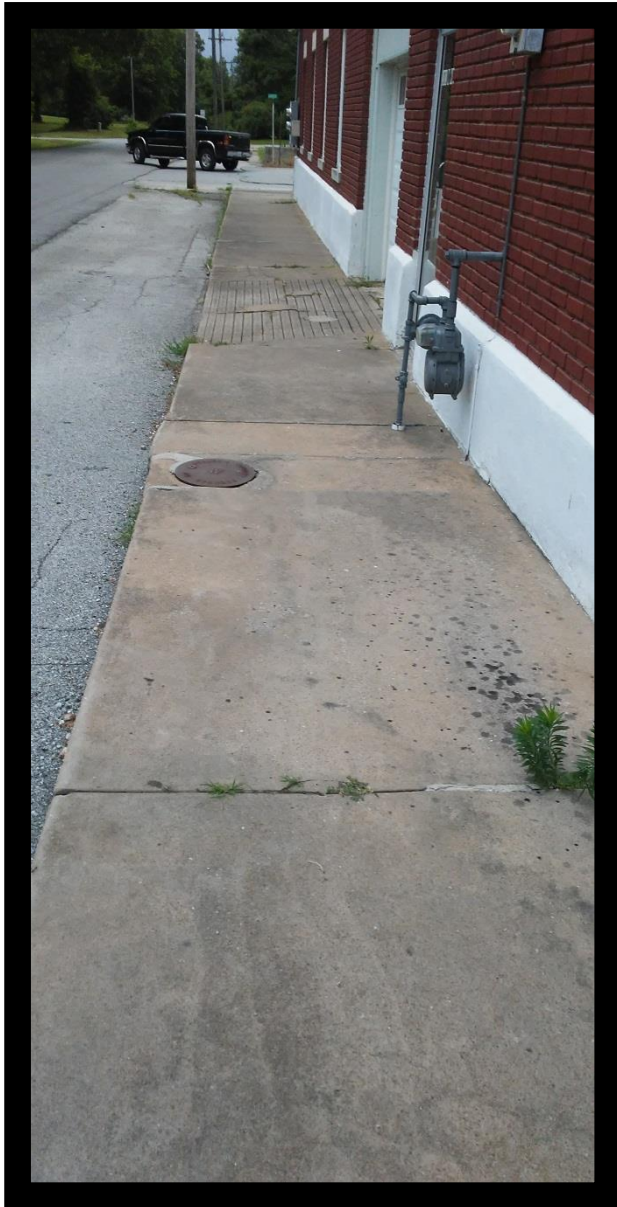




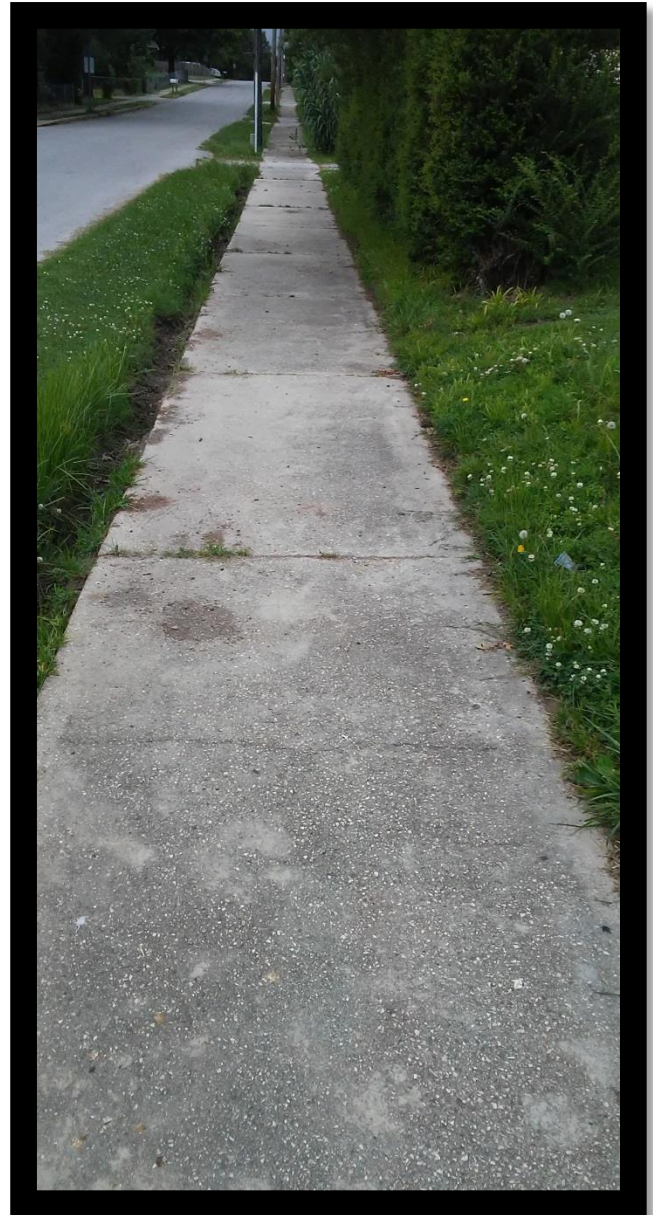
Corner of Market St. and Locust St.  
looking east on Market. Fair conditions.



Corner of Main St. and School St looking  
south on Main St. Good conditions.

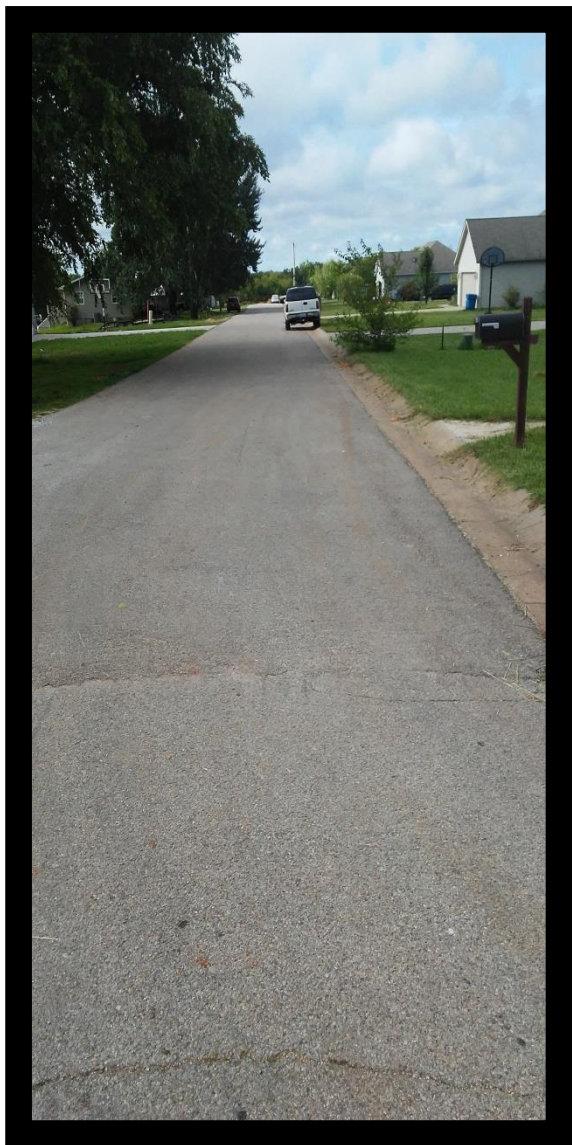


Corner of Market St. and Main St. looking north on Main St. Poor conditions

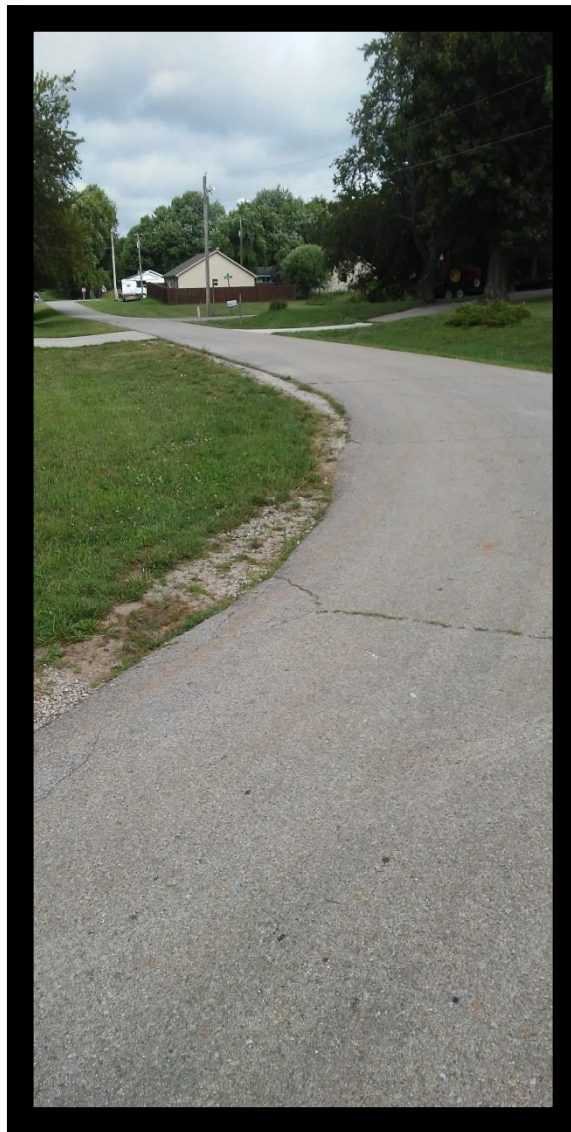


Corner of 4<sup>th</sup> St. and Main St. looking north on Main St. Poor conditions.



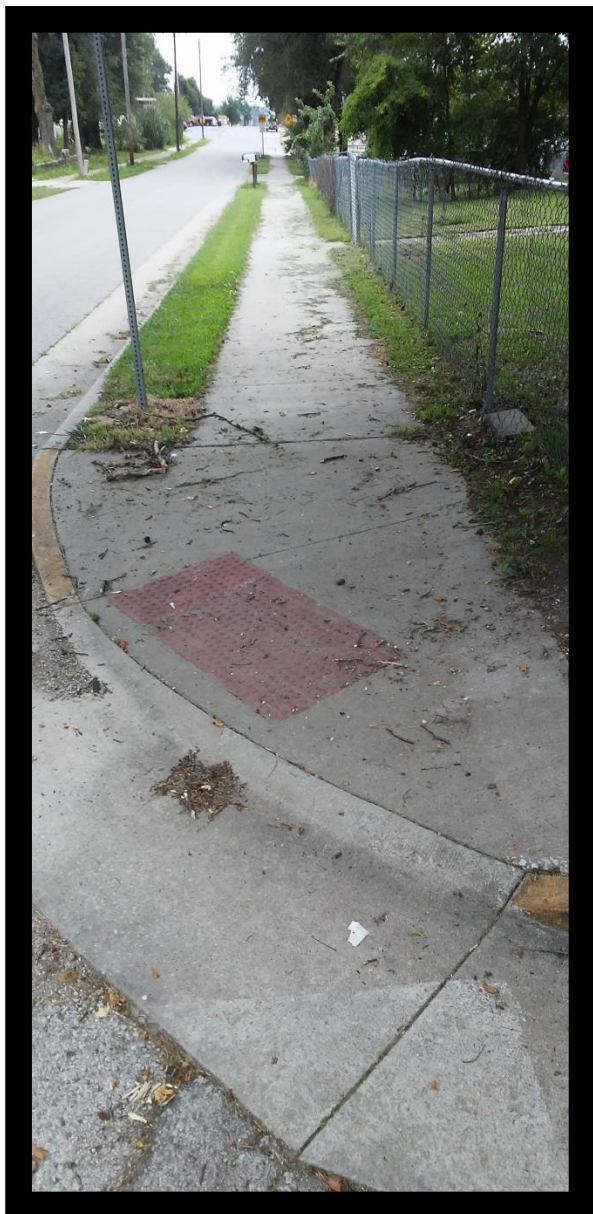


Corner of 3<sup>rd</sup> St. and George St looking south on George St. No sidewalk



Corner of 3<sup>rd</sup> St. and George St. looking west on 3<sup>rd</sup> St. No sidewalk





Corner of Walnut St. and Main St. looking south on Main St. good conditions.

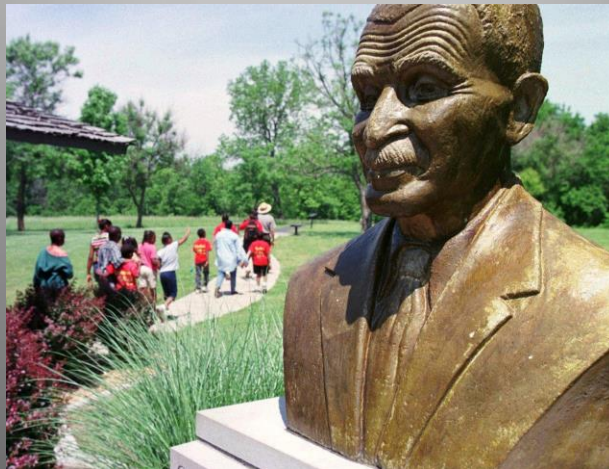




## Sidewalk Survey

All communities in the Harry S Truman Coordinating Council Region were sent a survey to understand current conditions and future needs concerning sidewalks. Copies of those surveys that were returned are included in this section. In compiling information received from surveys and by individual inspection of sidewalks in each community the following general overview of condition was created.

Survey Feedback	General Inspection
Of the 23 total survey respondents, nearly 60% believe that existing sidewalks are in poor conditions, while less than 10% believe that sidewalks are in good conditions. Approximately, 74% of respondents stated that there are an insufficient number of sidewalks. With regard to the importance of sidewalks to the respondents, 30% rated the importance highly (9 and 10 on a scale of 1 to 10).	Of the 2729 total feet of sidewalk that exists in Diamond, approximately 60% is in good condition, which is in stark contrast with survey feedback. Additionally, nearly 37% of sidewalks in Diamond are in poor condition, while only 3% is in fair condition. Finally, nearly 10 miles of Diamond is without sidewalks at all.





## HSTCC Sidewalk Inventory Project

### Diamond, MO

### May 17th, 2017

When most village, town, and city councils think about transportation, the focus lies heavily on streets, highways, and interstates. Increasingly, multi-modal transportation is coming to the forefront of the minds of citizens and government agencies. Multi-modal transportation includes ports, airports, and transit, but also includes sidewalks and trails. In an effort to enhance multi-modal transportation specifically concerning pedestrians and bicyclists, the Harry S Truman Coordinating Council is conducting a study of local offerings by jurisdiction in an effort to:

- Gauge needs and desires of local communities for sidewalks, trails, and other forms of pedestrian/cyclist-friendly infrastructure.
- Provide information to MoDOT concerning the existence of sidewalks, trails, etc. on state routes.
- Compile information for potential grant opportunities related to multi-modal infrastructure which could benefit Southwest Missouri.

Each jurisdiction is asked to complete the online survey. (If your jurisdiction does not currently have sidewalks, please indicate such on the survey.) Please enlist the help of your city officials, city managers, local roads supervisors/workers, and anyone else who may have information concerning local, existing sidewalks/trails. **We ask that you have completed the online survey by June 15<sup>nd</sup>.**

Your help is greatly appreciated in this information gathering. If you have any questions or need any assistance in completing this survey, please do not hesitate to contact me at 417-649-6400 or by email at [nhill@hstcc.org](mailto:nhill@hstcc.org)

Sincerely,

Nikki Hill  
Regional Transportation Planner/GIS

Link to survey:

<https://www.surveymonkey.com/r/DiamondSWA>





Thank you for taking time to fill out this short survey. Among towns and cities in southwest Missouri, sidewalks are consistently identified as a need for the region. This is part one of a two-part data collection, with the second part to take place in the fall of 2010. We appreciate your willingness to share information regarding the current status of sidewalks in your town.

City/Village Name: Diamond, MO

1. Does your jurisdiction currently have existing sidewalks? Yes No
- \*\*If sidewalks do not exist in your jurisdiction, please skip questions 2-7.
2. If sidewalks exist, does your jurisdiction have sidewalk codes or regulations? Yes No
  3. If sidewalk codes and/or regulations exist, which of the following do they address?  
Maintenance Snow Removal  
Construction as part of new development All of the above
  4. Please rate the overall condition of your sidewalks.  
Good Fair Poor
  5. Please rate the adequacy of your sidewalks. (Is the number of existing sidewalks sufficient for current usage?)  
More than Sufficient Sufficient Insufficient
  6. Please rate the width of existing sidewalks.  
Good Fair Poor
  7. Do the majority of your existing sidewalks have curbs or ramps where they join the street?  
Curbs Ramps Equal number
  8. On a scale of 1 to 10, how important are sidewalks to your citizens?  
Unimportant Very Important  
1 2 3 4 5 6 7 8 9 10
  9. Does your jurisdiction have a school within its city limits? Yes No
  10. Is your jurisdiction actively seeking to expand existing sidewalks:  
At this time In the future We will not seek to expand.
  11. If expansion is being considered, has your jurisdiction created a comprehensive sidewalk plan?  
Yes, the plan has been completed.  
Yes, the plan is currently in development.  
No, but we are considering it.
  12. If expansion is being considered, what areas of your jurisdiction are being targeted for sidewalk expansion/improvements?



13. If expansion is being considered, which of the following reasons best describes the city/village's motive?

Health/wellness

Beautification

Accessibility

Reducing environmental impact

Other: \_\_\_\_\_