

HARRY S TRUMAN COORDINATING COUNCIL

2018

HARRY S TRUMAN
COORDINATING COUNCIL



SIDEWALK ASSESSMENTS

How does HSTCC determine sidewalk criteria?

Condition	Criteria
Good	Sidewalk is free from cracking, buckling, gravel, or other significant flaws. Includes compliance to earlier standards of ADA compliance in that curb cuts and ramps exist, but may not adhere to slope standards, etc. See Figure 1.
Fair	Sidewalk is passable, but contains cracking, minor buckling, or other features which may limitedly impact pedestrian traffic. This may include minor vegetative growth, the use of stairs or steps as transitions, crumbling sections of sidewalk, etc. See Figure 2.
Poor	Sidewalk exists, but may include instances of deep cracking or buckling, missing sections, crushed sections, or significant vegetative overgrowth. Pedestrian traffic along such sidewalks would be significantly impeded due to condition. See Figure 3.



Figure 1. Neosho, MO



Figure 2. Carterville, MO



Figure 3. Oronogo, MO

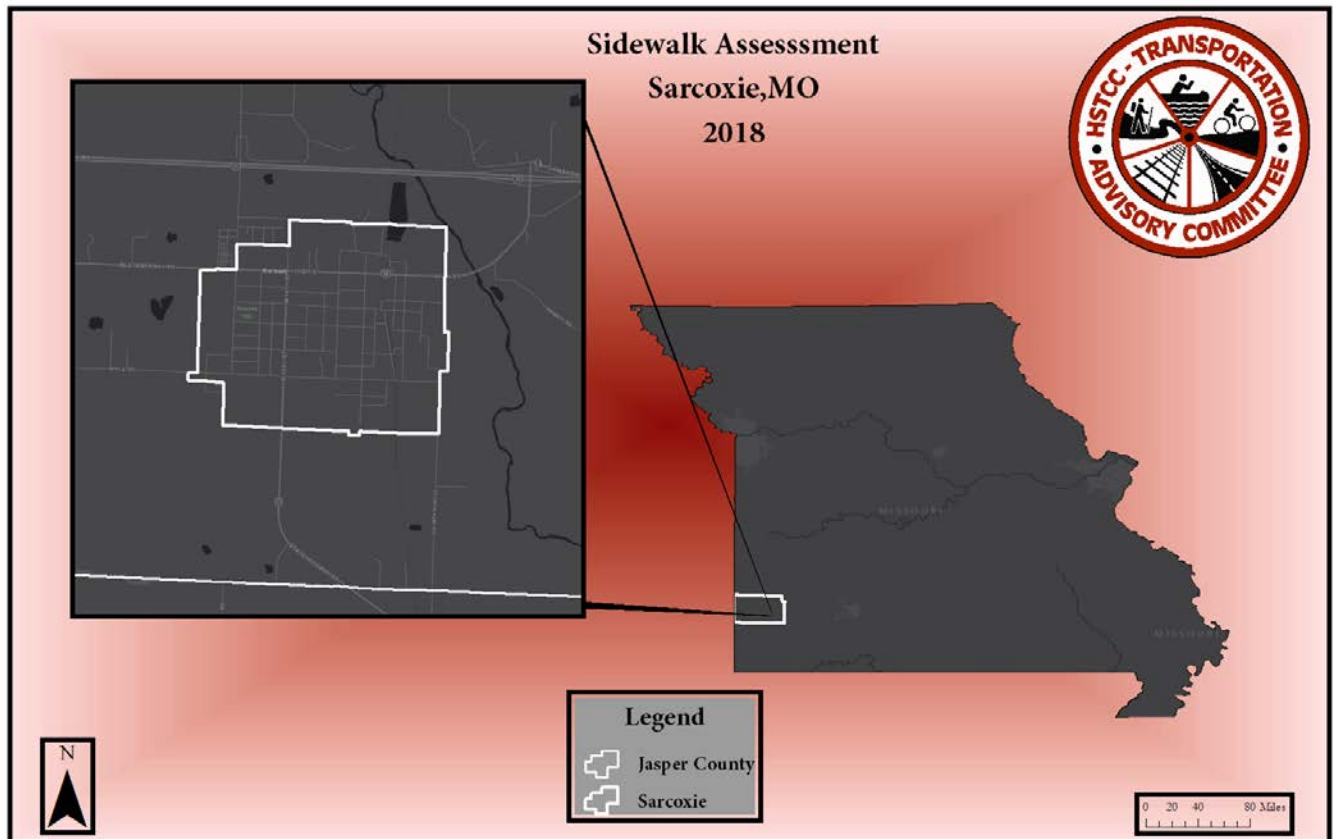
800 E Pennell St, Carl Junction, MO
64834



Phone: 417-649-6400
Fax 417-649-6409

Sidewalk Assessment

Sarcoxie, Mo
2018





Sidewalk Assessment

Sarcoxie, MO

Sarcoxie, MO is located in the southeast portion of Jasper County near Center Creek. Established in 1831 Sarcoxie was originally called Centerville. The town was later named after a friendly local Indian Chief, Rising Sun of the Turtle Band of the Delaware Indians, who was also known as "Chief Sarcoxie". Sarcoxie is the oldest town in Jasper County and has been known as the strawberry and peony capital of the world.

The incorporated community of Sarcoxie, MO is included in the 2018 assessment. The sidewalks in the City of Sarcoxie were assessed on their current conditions in Apr by staff at the Harry S Truman Coordinating Council and a student intern from Missouri Southern State University. The data collected by the student intern was reviewed by HSTCC staff. The chart below depicts the overall condition of sidewalks in the city:

Conditions in Linear Feet					
	Good	Fair	Poor	Total Sidewalk	
Sarcoxie, MO	2,324 feet	2,016 feet	19,030 feet	23,371 feet	



Criteria

The following criteria were used in assessing conditions. These assessment criteria are being used for assessments by all Regional Planning agencies across Missouri.

Good: Unlikely to hinder mobility of the average pedestrian. The sidewalk is free from significant cracking, buckling, gravel surfaces, or other debris which would impede pedestrian traffic.

Map key: Green

Fair: Uneven and distressed surface that hinders mobility of the average pedestrian. The sidewalk contains surface cracks, vegetation overgrowth, or debris.

Map key: Yellow

Poor: Impassable to mobility impaired pedestrian; hinders mobility of average pedestrian. The sidewalk has deep cracking or buckling, significant vegetative overgrowth, poor drainage, bulging surface (due to tree roots) and / or debris such that pedestrian travel would be impeded.

Map key: Red

Gap: No sidewalk is present.

Map Key: Gray

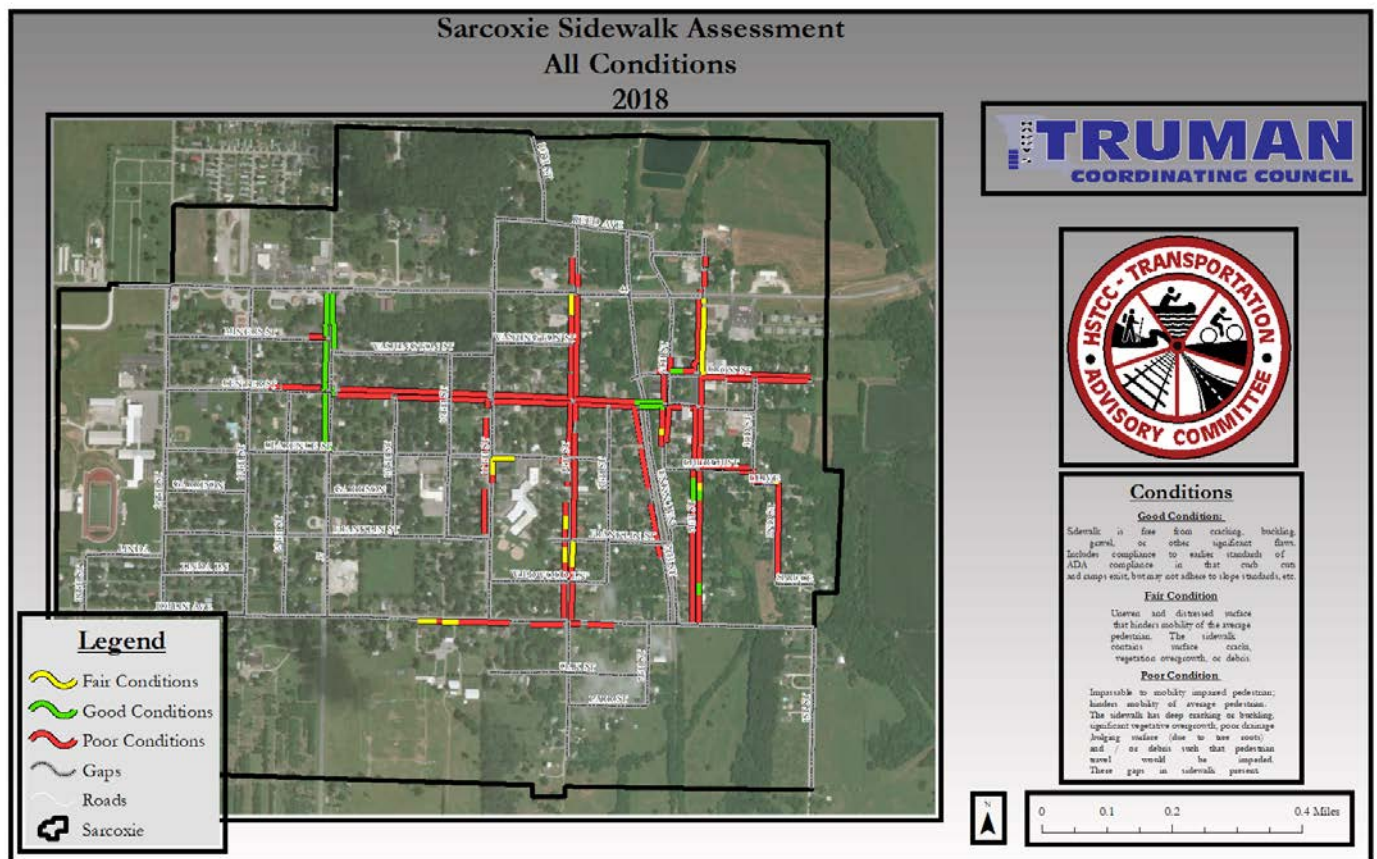


Figure 1 represents all conditions in the City of Sarcoxie

Sarcoxie Sidewalk Assessmen
Poor Conditions

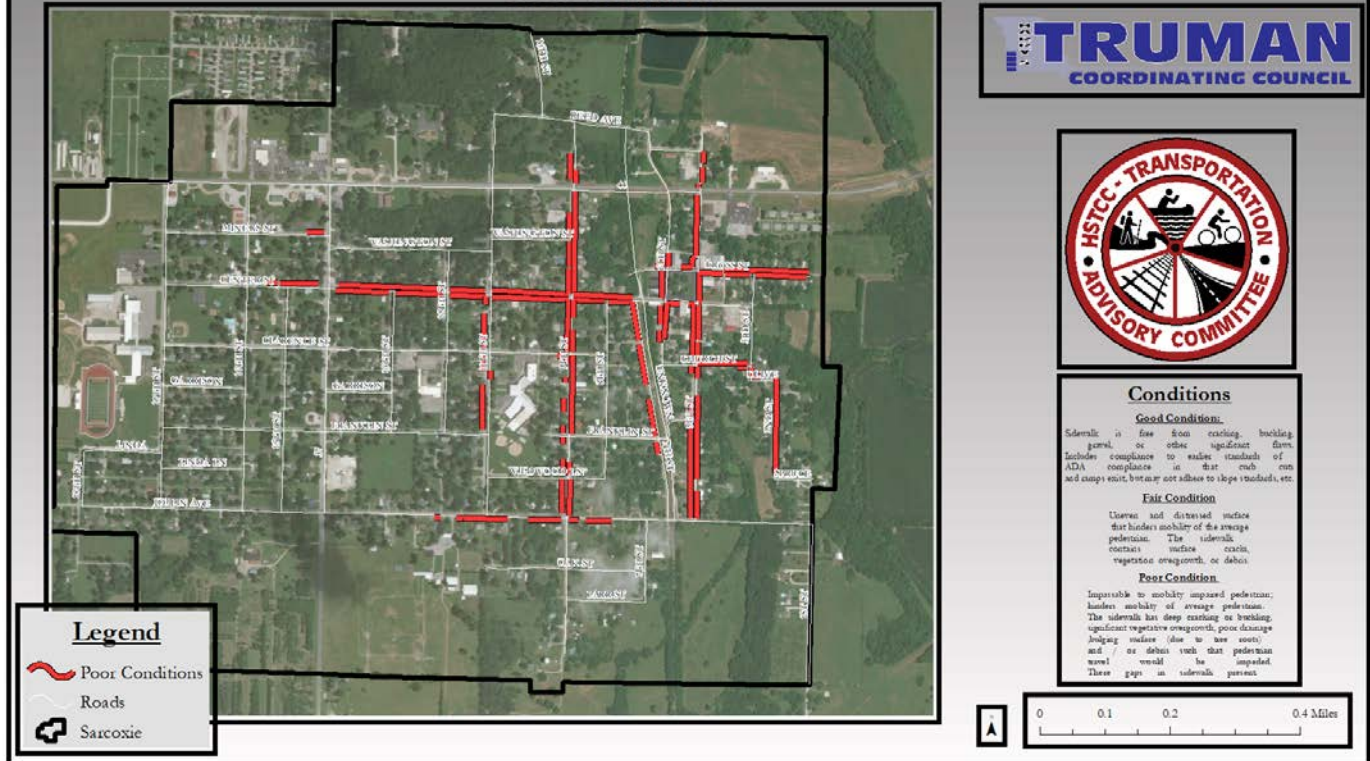


Figure 2 represents poor conditions in the City of Sarcoxie

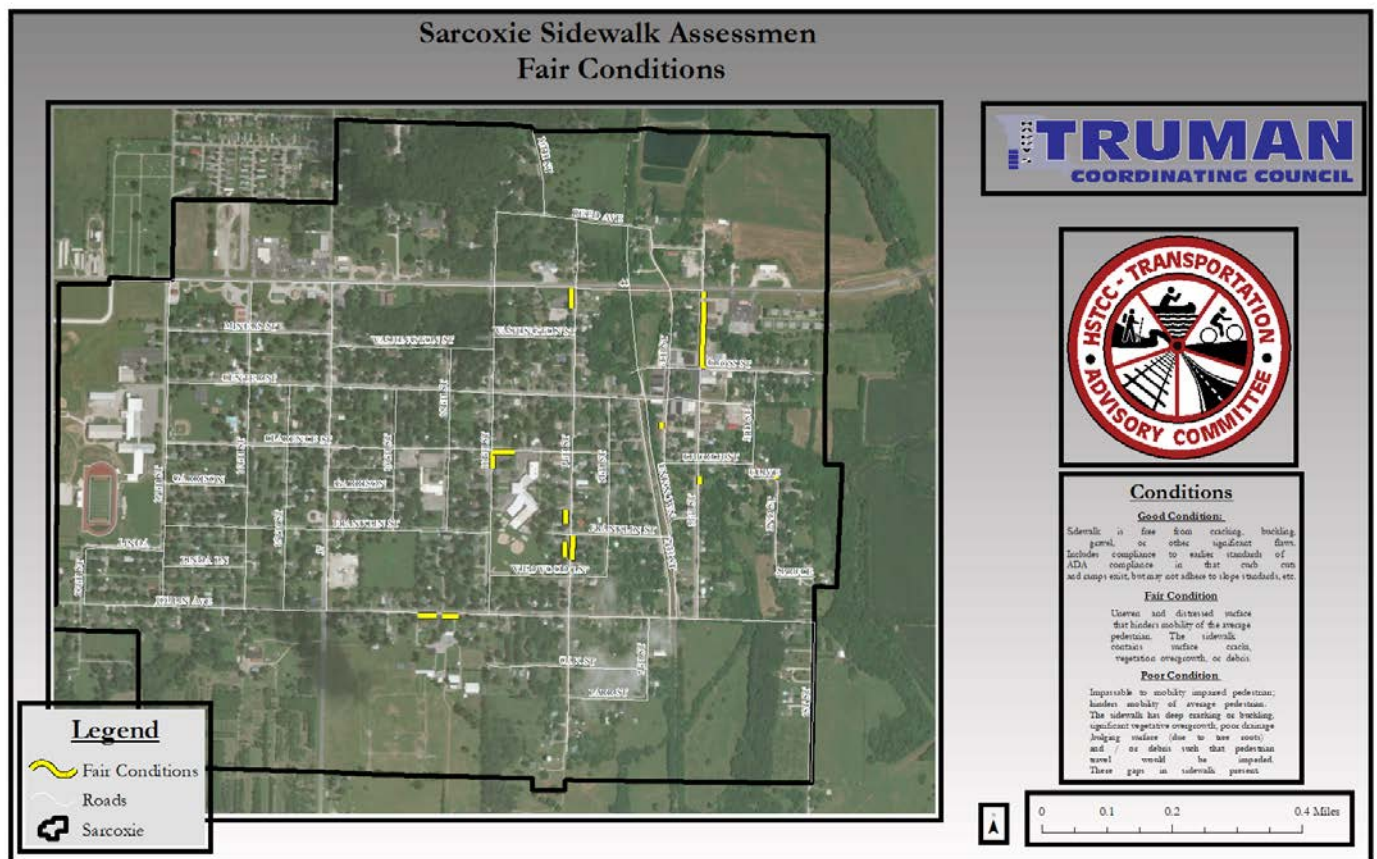


Figure 3 represents fair conditions in the City of Sarcouxie

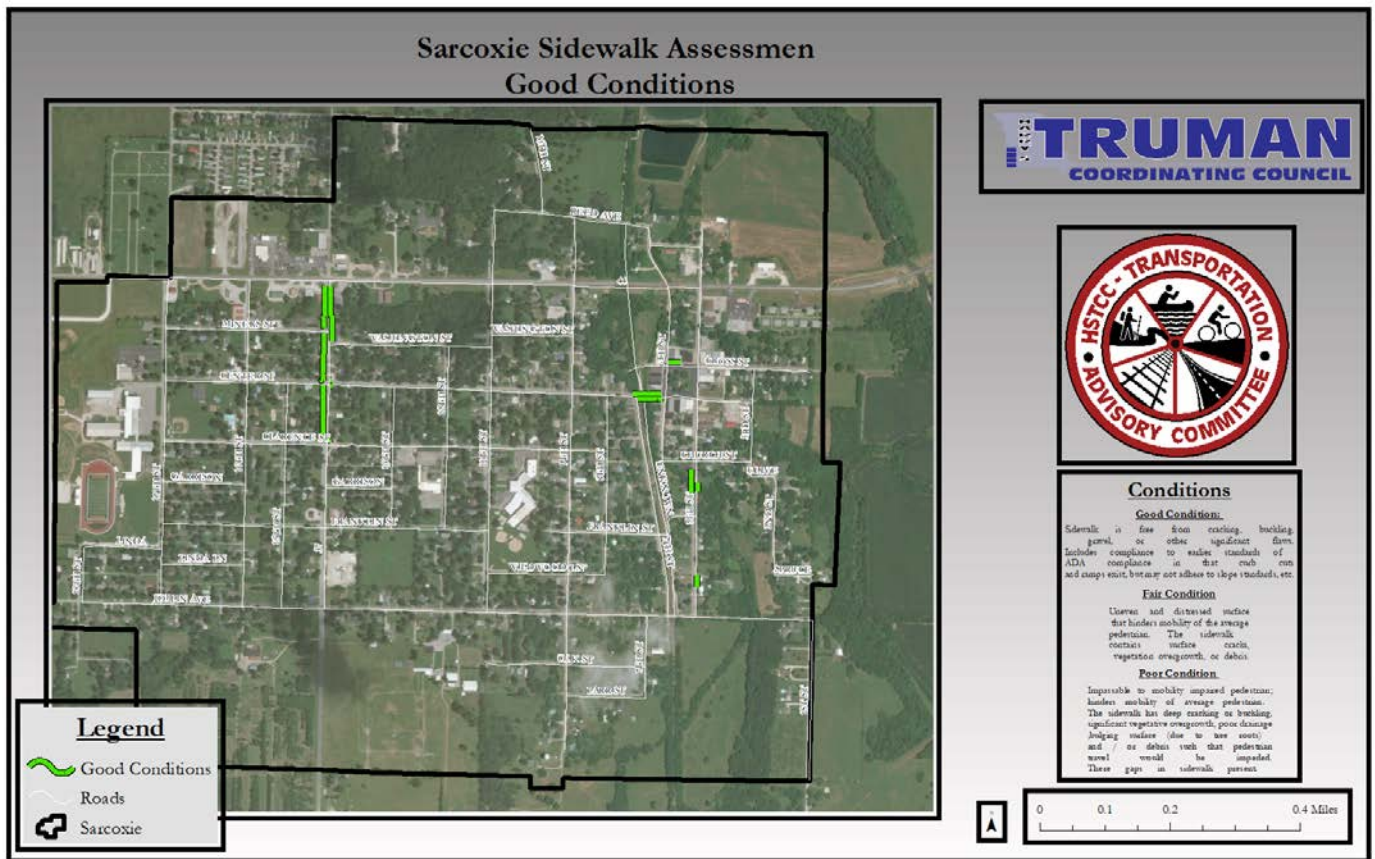


Figure 4 represents good conditions in the City of Sarcoxie



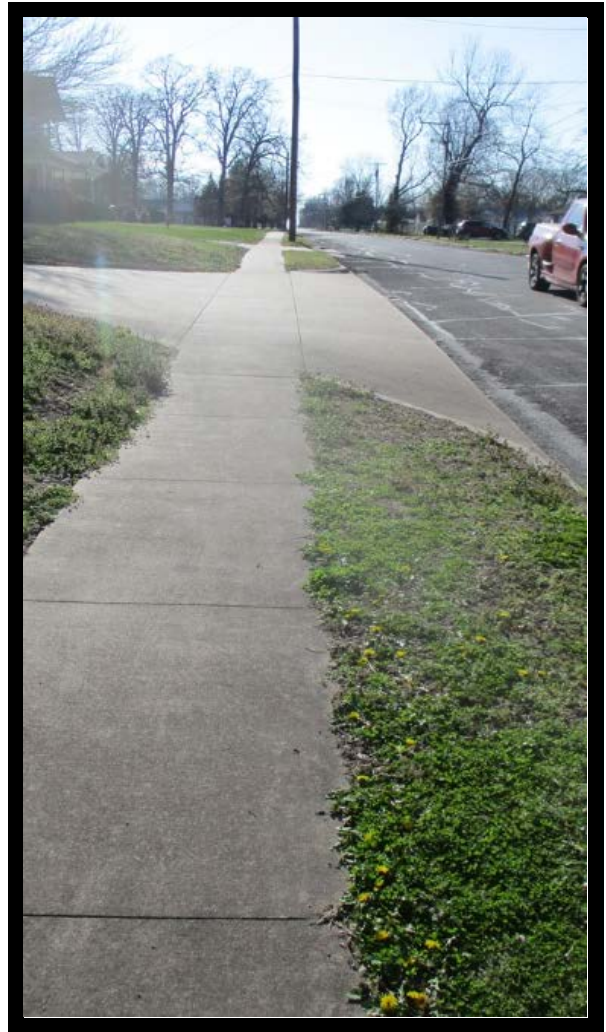
Corner of 2nd St. and Olive St.



2nd St. facing south. Poor conditions.



Corner of Joplin St. and S 12th St.



S Joplin St. facing west. Fair conditions.



Corner of 14th St. and Center St.



Center St. facing east. Good conditions.



Corner of Franklin St. and 9th St.



Franklin St. facing east. No sidewalk



Corner of Washington St. and 14th St.



Washington St. facing east. No sidewalk



Sidewalk Survey

All communities in the Harry S Truman Coordinating Council Region were sent a survey to understand current conditions and future needs concerning sidewalks. Copies of those surveys that were returned are included in this section. In compiling information received from surveys and by individual inspection of sidewalks in each community the following general overview of condition was created.

Survey Feedback	General Inspection
Of the 12 survey responses, 100% of respondents express that there are an insufficient amount of sidewalks in Sarcoxie. Approximately 92% of respondents state that existing sidewalks are in poor condition, while approximately 8% state existing sidewalks are in fair condition. No respondents believed any sidewalks were in good condition.	Of the 23,371 feet of total sidewalk in Sarcoxie, approximate feedback. Nearly 10% of existing sidewalks are in good condition, 9% are in fair condition, which is fairly consistent with respondent fair condition. With the exception to respondent feedback on good conditions this is fairly consistent with respondent feedback. Another 81% of sidewalk in Sarcoxie is in poor condition.



HSTCC Sidewalk Inventory Project Sarcoxie, MO January 23rd, 2018

When most village, town, and city councils think about transportation, the focus lies heavily on streets, highways, and interstates. Increasingly, multi-modal transportation is coming to the forefront of the minds of citizens and government agencies. Multi-modal transportation includes ports, airports, and transit, but also includes sidewalks and trails. In an effort to enhance multi-modal transportation specifically concerning pedestrians and bicyclists, the Harry S Truman Coordinating Council is conducting a study of local offerings by jurisdiction in an effort to:

- Gauge needs and desires of local communities for sidewalks, trails, and other forms of pedestrian/cyclist-friendly infrastructure.
- Provide information to MoDOT concerning the existence of sidewalks, trails, etc. on state routes.
- Compile information for potential grant opportunities related to multi-modal infrastructure which could benefit Southwest Missouri.

Each jurisdiction is asked to complete the online survey. (If your jurisdiction does not currently have sidewalks, please indicate such on the survey.) Please enlist the help of your city officials, city managers, local roads supervisors/workers, and anyone else who may have information concerning local, existing sidewalks/trails. **We ask that you have completed the online survey by April 1st.**

Your help is greatly appreciated in this information gathering. If you have any questions or need any assistance in completing this survey, please do not hesitate to contact me at 417-649-6400 or by email at nhill@hstcc.org

Sincerely,

Nikki Hill
Regional Transportation Planner/GIS

Sidewalk Survey Link:

<https://www.surveymonkey.com/r/sarcoxieSWA>



Thank you for taking time to fill out this short survey. Among towns and cities in southwest Missouri, sidewalks are consistently identified as a need for the region. This is part one of a two-part data collection, with the second part to take place in the fall of 2018. We appreciate your willingness to share information regarding the current status of sidewalks in your town.

City/Village Name: _____ Sarcoxie, MO _____

1. Does your jurisdiction currently have existing sidewalks? Yes No
**If sidewalks do not exist in your jurisdiction, please skip questions 2-7.
2. If sidewalks exist, does your jurisdiction have sidewalk codes or regulations? Yes No
3. If sidewalk codes and/or regulations exist, which of the following do they address?
Maintenance Snow Removal
Construction as part of new development All of the above
4. Please rate the overall condition of your sidewalks.
Good Fair Poor
5. Please rate the adequacy of your sidewalks. (Is the number of existing sidewalks sufficient for current usage?)
More than Sufficient Sufficient Insufficient
6. Please rate the width of existing sidewalks.
Good Fair Poor
7. Do the majority of your existing sidewalks have curbs or ramps where they join the street?
Curbs Ramps Equal number
8. On a scale of 1 to 10, how important are sidewalks to your citizens?
Unimportant 1 2 3 4 5 6 7 8 9 10 Very Important
9. Does your jurisdiction have a school within its city limits? Yes No
10. Is your jurisdiction actively seeking to expand existing sidewalks:
At this time In the future We will not seek to expand.
11. If expansion is being considered, has your jurisdiction created a comprehensive sidewalk plan?
Yes, the plan has been completed.
Yes, the plan is currently in development.
No, but we are considering it.



12. If expansion is being considered, what areas of your jurisdiction are being targeted for sidewalk expansion/improvements?

13. If expansion is being considered, which of the following reasons best describes the city/village's motive?

Health/wellness

Beautification

Accessibility

Reducing environmental impact

Other: _____



HARRY S TRUMAN
COORDINATING COUNCIL

HARRY S TRUMAN
COORDINATING
COUNCIL
2018